



**VESTEL WHITE GOODS  
CUSTOMER SUPPORT**

# **VESTEL NO-FROST SERVICE MANUAL**

| <b>VESTEL<br/>MODEL :</b> | <b>CUSTOMER<br/>MODEL :</b> | <b>CUSTOMER :</b>     | <b>PRODUCT<br/>CODE:</b> |
|---------------------------|-----------------------------|-----------------------|--------------------------|
| <b>NT 465MS</b>           | <b>RF 47T</b>               | <b>GREECE / CARAD</b> | <b>10010447</b>          |

| <b><i>CONTENTS</i></b>                    | <b><i>PAGE</i></b> |
|-------------------------------------------|--------------------|
| <i>01. SPECIFICATIONS</i>                 | <i>1-2</i>         |
| <i>02. WIRE DIAGRAM</i>                   | <i>3</i>           |
| <i>03. AIR FLOW DIAGRAM</i>               | <i>4</i>           |
| <i>04. REFRIGERANT CYCLE DIAGRAM</i>      | <i>5</i>           |
| <i>05. COMPRESSOR AREA VIEW</i>           | <i>6</i>           |
| <i>06. MAIN COMPONENTS</i>                | <i>7-10</i>        |
| <i>07. CHANGING THE DOORWAY DIRECTION</i> | <i>11-13</i>       |
| <i>08. TROUBLE-SHOOTING CHART</i>         | <i>14</i>          |
| <i>09. FREEZER COMPARTMENT</i>            | <i>15-23</i>       |
| <i>10. REPLACEMENT OF DOOR SWITCH</i>     | <i>24</i>          |
| <i>11. REFRIGERATOR COMPARTMENT</i>       | <i>25-31</i>       |
| <i>12. INTERIOR PARTS</i>                 | <i>32</i>          |
| <i>13. INTERIOR PARTS LIST</i>            | <i>33</i>          |
| <i>14. MULTIFLOW PARTS</i>                | <i>34</i>          |
| <i>15. MULTIFLOW PARTS LIST</i>           | <i>35</i>          |
| <i>16. DOOR ASSY. PARTS</i>               | <i>36</i>          |
| <i>17. DOOR ASSY. PARTS LIST</i>          | <i>37</i>          |
| <i>18. UNIT PARTS</i>                     | <i>38</i>          |
| <i>19. UNIT PARTS LIST</i>                | <i>39-40</i>       |

|                              |                        |                            |
|------------------------------|------------------------|----------------------------|
| <b>VESTEL</b><br>WHITE GOODS | <b>VESTEL NO-FROST</b> | <b>JUNE</b><br><b>2003</b> |
|                              | <b>SPECIFICATIONS</b>  |                            |

**MAIN SPECIFICATION**

|                     |                  |
|---------------------|------------------|
|                     | <b>RF 47T</b>    |
| CLIMATE TYPE        | TROPICAL         |
| DOOR COLOR          | WHITE            |
| DOOR                | 2 SIDE AVAILABLE |
| DOOR INSULATION     | CYCLOPENTANE     |
| INSULATION          | CYCLOPENTANE     |
| STATIONARY FOOT     | 2                |
| REFRIGERATOR GASKET | WHITE            |
| FREEZER GASKET      | WHITE            |

**ELECTRICAL SPECIFICATION**

|                    |                    |
|--------------------|--------------------|
|                    | <b>RF 47T</b>      |
| ENERGY CLASS       | C                  |
| VOLTAGE/FREQUENCY  | 220-240V-50Hz      |
| POWER              | 250 W              |
| LAMP TYPE          | E14 / 220-240V/15W |
| CURRENT            | 1.8 A              |
| REFRIGERANT        | R134a              |
| REFRIGERANT CHARGE | 175 gr             |

**COMPRESSOR**

|            |                 |
|------------|-----------------|
|            | <b>RF 47T</b>   |
| COMPRESSOR | FG85HAK & NL9FT |

**RELAY & THERMIC**

|              |                    |
|--------------|--------------------|
|              | <b>RF 47T</b>      |
| RELAY TYPE   | 8EA-501 & 103N0018 |
| THERMIC TYPE | 4TM276RFBYY-53     |

**REFRIGERATING SYSTEM**

|                           |                |
|---------------------------|----------------|
|                           | <b>RF 47T</b>  |
| PERFORMANCE (Star Rating) | 4              |
| FREEZER CAPACITY          | 5.3 kg/24h     |
| DRYER                     | 10 gr.         |
| DEFROST TYPE              | Automatic      |
| DEFROST HEATER POWER      | 175 W          |
| CAPILLARY TUBE            | 0.71 x 2500 mm |

**DIMENSIONS**

|                                |               |
|--------------------------------|---------------|
|                                | <b>RF 47T</b> |
| REFRIGERATOR VOLUME GROSS (lt) | 327           |
| FREEZER VOLUME GROSS (lt)      | 108           |
| WEIGHT (kg)                    | 78            |
| HEIGHT (mm)                    | 1818          |
| DEPTH (mm)                     | 685           |
| WIDHT (mm)                     | 700           |

**PACKEGED DIMENSIONS**

|             |               |
|-------------|---------------|
|             | <b>RF 47T</b> |
| WEIGHT (kg) | 82.1          |
| HEIGHT (mm) | 1895          |
| DEPTH (mm)  | 746           |
| WIDHT (mm)  | 770           |

|                           |                                   |
|---------------------------|-----------------------------------|
| <b>VESTEL WHITE GOODS</b> | <b>CUSTOMER</b><br><b>SUPPORT</b> |
|---------------------------|-----------------------------------|

|                              |                        |                            |
|------------------------------|------------------------|----------------------------|
| <b>VESTEL</b><br>WHITE GOODS | <b>VESTEL NO-FROST</b> | <b>JUNE</b><br><b>2003</b> |
|                              | <b>SPECIFICATIONS</b>  |                            |

**THERMOSTAT**

|                                      |                       |
|--------------------------------------|-----------------------|
|                                      | <b>RF 47T</b>         |
| <b>FREEZER THERMOSTAT</b>            | ATB-Y1130-GND Pacific |
| <b>REF. THERMOSTAT (DUCT DUMPER)</b> | XGB-X227 SAGINOMIYA   |

**TEMPERATURE CONTROL (MAX)**

|                               |               |
|-------------------------------|---------------|
|                               | <b>RF 47T</b> |
| <b>FREEZER THERMOSTAT ON</b>  | -21.0 °C      |
| <b>FREEZER THERMOSTAT OFF</b> | -25.0 °C      |

**TEMPERATURE CONTROL (MIN)**

|                               |               |
|-------------------------------|---------------|
|                               | <b>RF 47T</b> |
| <b>FREEZER THERMOSTAT ON</b>  | -15.0 °C      |
| <b>FREEZER THERMOSTAT OFF</b> | -19.0 °C      |

**TEMPERATURE CONTROL-DUCT DUMPER**

|            |             |               |             |
|------------|-------------|---------------|-------------|
|            | <b>COLD</b> | <b>NORMAL</b> | <b>WARM</b> |
| <b>ON</b>  | -----       | > 5           | > 10        |
| <b>OFF</b> | < -13       | - 6 ± 1.5 °C  | -----       |

**REFRIGERATOR ACCESSORIES**

|                               |               |
|-------------------------------|---------------|
|                               | <b>RF 47T</b> |
| <b>CRISPER</b>                | 2             |
| <b>CRISPER COVER</b>          | 1             |
| <b>SHELF</b>                  | 2             |
| <b>MAGIC SHELF FRONT+BACK</b> | 1             |
| <b>CHILLER SECTION</b>        | 2             |

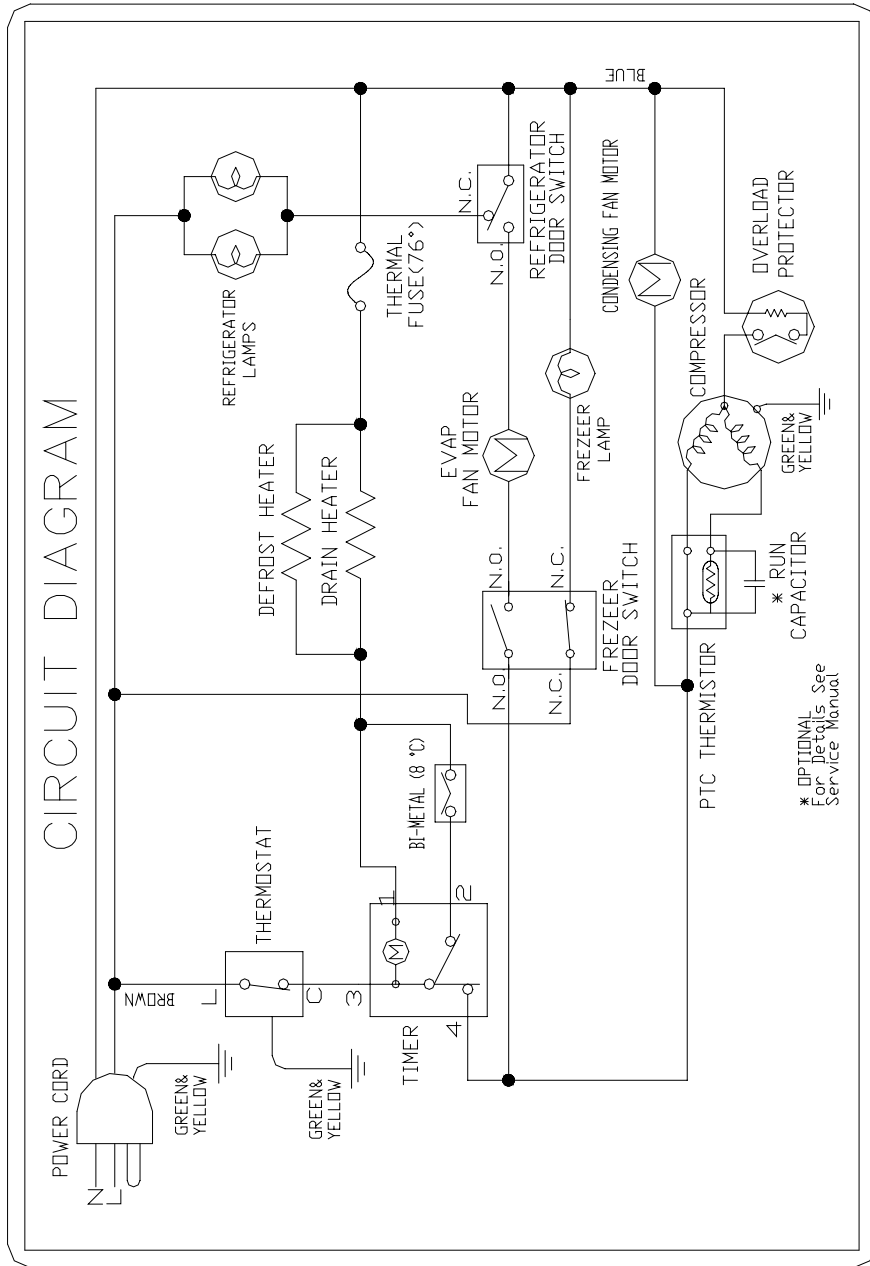
**FREEZER ACCESSORIES**

|                           |               |
|---------------------------|---------------|
|                           | <b>RF 47T</b> |
| <b>SHELF</b>              | 1             |
| <b>FAST FREEZER SHELF</b> | 1             |

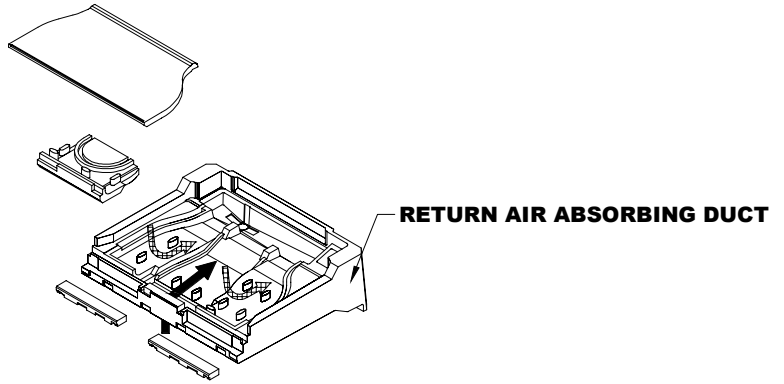
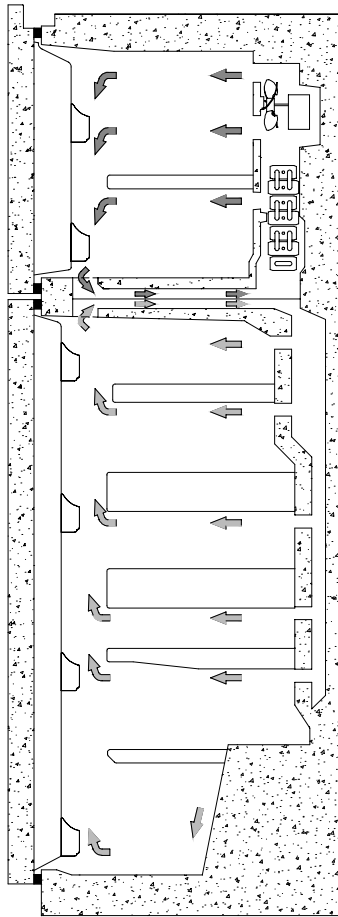
**DOOR ACCESSORIES**

|                           |               |
|---------------------------|---------------|
|                           | <b>RF 47T</b> |
| <b>FREEZER DOOR SHELF</b> | 2             |
| <b>MOVEABLE SHELF</b>     | 4             |
| <b>BUTTER SHELF</b>       | 1             |
| <b>BOTTLE SHELF</b>       | 1             |
| <b>BOTTOM SHELF</b>       | 1             |

|                           |                                   |
|---------------------------|-----------------------------------|
| <b>VESTEL WHITE GOODS</b> | <b>CUSTOMER</b><br><b>SUPPORT</b> |
|---------------------------|-----------------------------------|



|                              |                         |                            |
|------------------------------|-------------------------|----------------------------|
| <b>VESTEL</b><br>WHITE GOODS | <b>VESTEL NO-FROST</b>  | <b>JUNE</b><br><b>2003</b> |
|                              | <b>AIR FLOW DIAGRAM</b> |                            |

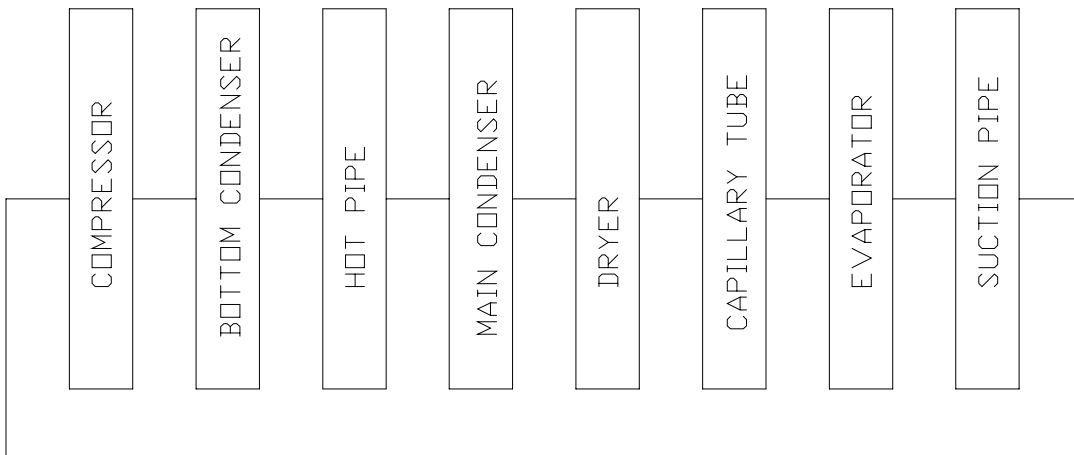
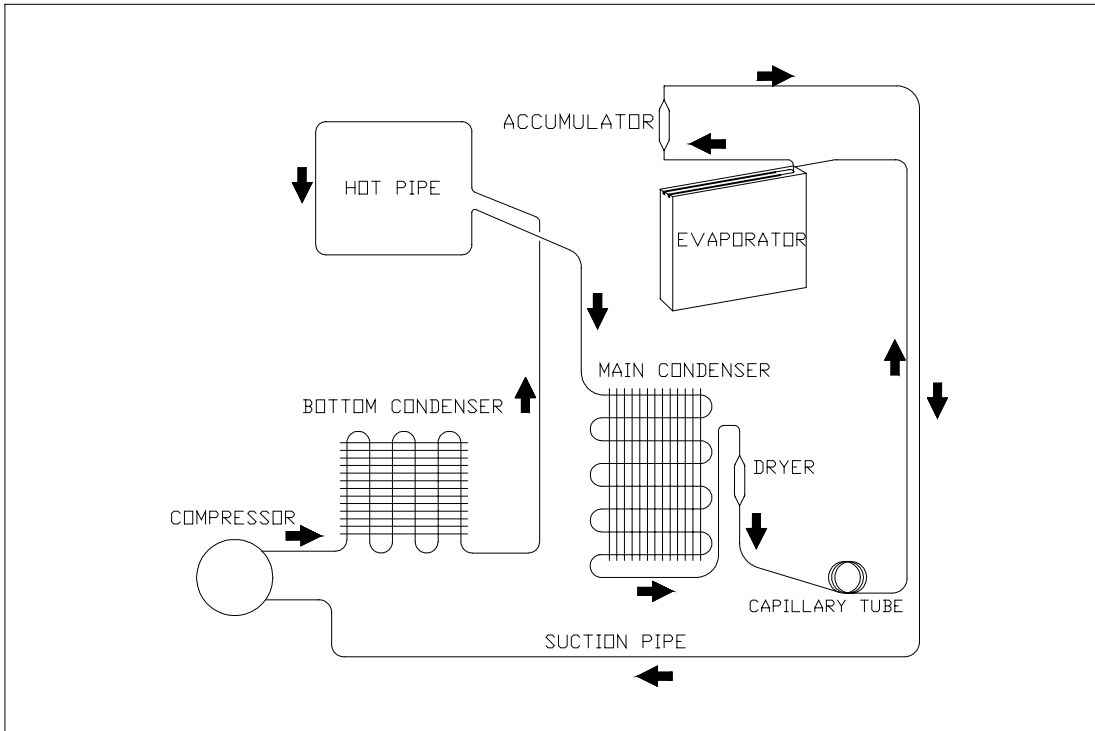


**RETURN AIR ABSORBING DUCT**

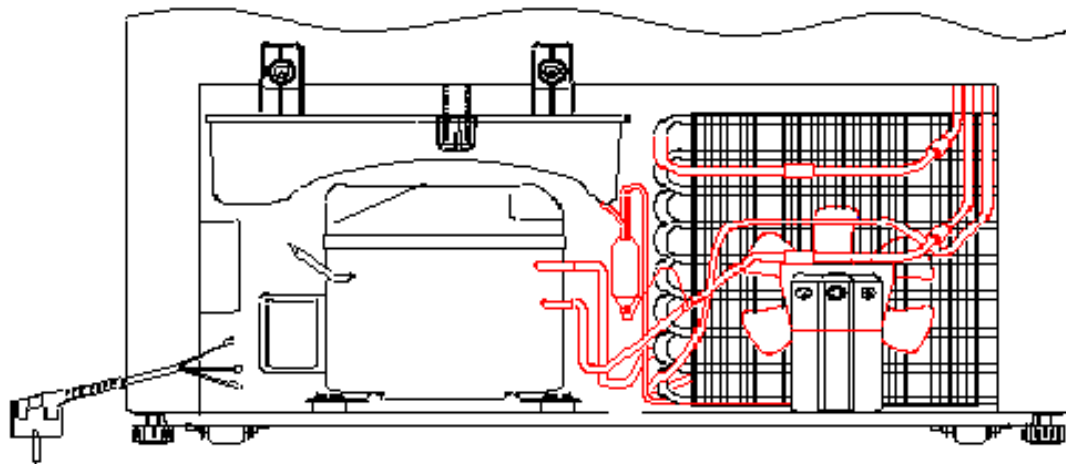
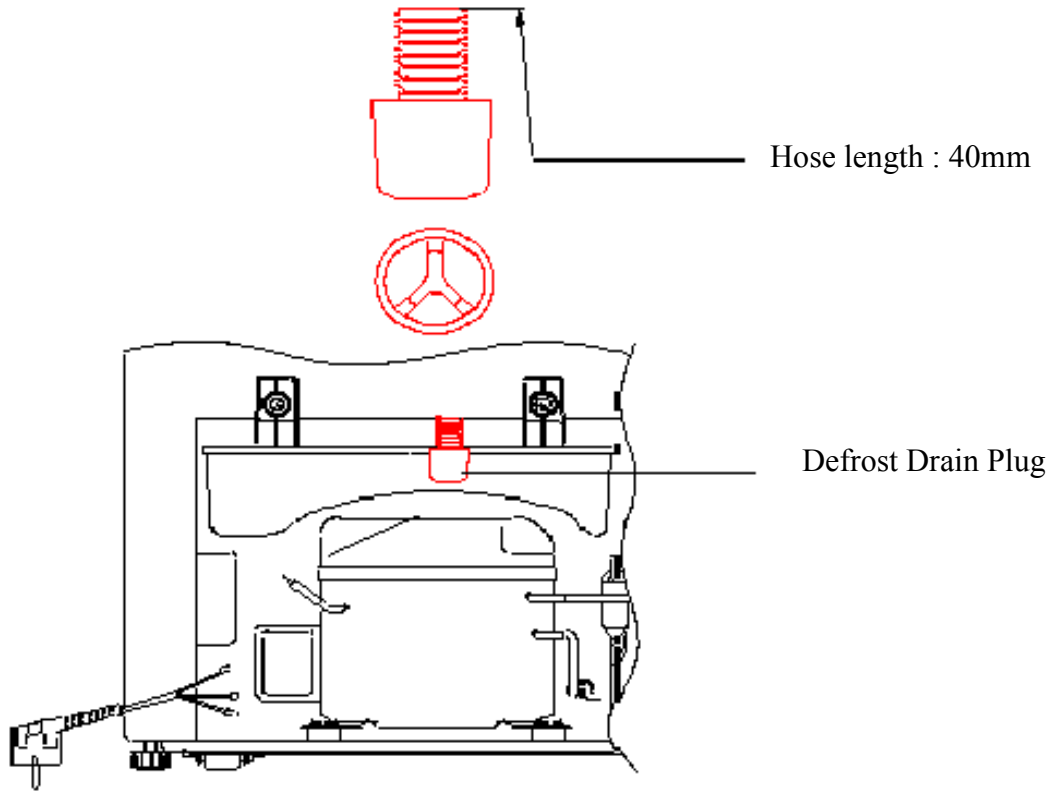
- ⇨ FREEZER SECTION RETURN AIR**
- REFRIGERATOR SECTION RETURN AIR**

**NOTE THAT: RETURN AIRS,  
WHICH COMES FROM FREEZER  
AND REFRIGERATOR SECTION  
DO NOT MIX EACH OTHER**

|                           |                                   |
|---------------------------|-----------------------------------|
| <b>VESTEL WHITE GOODS</b> | <b>CUSTOMER</b><br><b>SUPPORT</b> |
|---------------------------|-----------------------------------|



|                              |                             |                            |
|------------------------------|-----------------------------|----------------------------|
| <b>VESTEL</b><br>WHITE GOODS | <b>VESTEL NO-FROST</b>      | <b>JUNE</b><br><b>2003</b> |
|                              | <b>COMPRESSOR AREA VIEW</b> |                            |



|                           |                                   |
|---------------------------|-----------------------------------|
| <b>VESTEL WHITE GOODS</b> | <b>CUSTOMER</b><br><b>SUPPORT</b> |
|---------------------------|-----------------------------------|



|                              |                        |                            |
|------------------------------|------------------------|----------------------------|
| <b>VESTEL</b><br>WHITE GOODS | <b>VESTEL NO-FROST</b> | <b>JUNE</b><br><b>2003</b> |
|                              | <b>MAIN COMPONENTS</b> |                            |

**TIMER :**

It is located at the rearside of the appliance (near the comp.)

Main function of timer: Perform one cycle (360°) in 8 hours. (that is the accumulated working hours of the compressor) at the end of the one cycle of timer, defrost begins.

**FREZEER THERMOSTAT:**

It is located at left upper side of the frezeer compartment.

Main function:Decide to compressor working according to temperature of freezer compartment.

(See on - off values in page 2)

**REFRIGERATOR (DAMPER) THERMOSTAT:**

Main purpose is to regulate the temperature of the refrigerator compartment.

If the refrigerator compartment temperature reaches to 5°C then the dumper thermostat will be opened. If the refrigerator compartment temperature reaches to -6°C then the dumper thermostat will be closed closed.

|                           |                                   |
|---------------------------|-----------------------------------|
| <b>VESTEL WHITE GOODS</b> | <b>CUSTOMER</b><br><b>SUPPORT</b> |
|---------------------------|-----------------------------------|

|                              |                        |                            |
|------------------------------|------------------------|----------------------------|
| <b>VESTEL</b><br>WHITE GOODS | <b>VESTEL NO-FROST</b> | <b>JUNE</b><br><b>2003</b> |
|                              | <b>MAIN COMPONENTS</b> |                            |

**HEATERS:**

**1. RADIANT (DEFROST) HEATER (150W ) :**

Radiant heater is made up special materials and consist of heater (150 W) and both side of the heater have unburnable silicone caps and also heater coated special materials to prevent unwanted smells.

Radiant heater is located under the evaporater.

**2. DRAIN HOSE HEATER ( 5W ) :**

It is located inside of the drain hose.

Function:Prevent the ice occumulation inside of hose during the defrost.

If the drain heater is broken (Unusual) it can not be change.

**BI-METAL THERMOSTAT ASSY. :**

It is located on the accumulator.

Function:Stop the defrost When the bi-metal sense the 8 °C during the appliance is defrost operation

**THERMAL FUSE :**

in spite of frezeer temperature reach 8 °C defrost operation will be not stop if the Bi-Metal thermostat is broken. So radiant heater continue to run that's why it can be cause fire. To prevent the fire thermal fuse blow when the temperature reach 76 °C inside the frezeer.

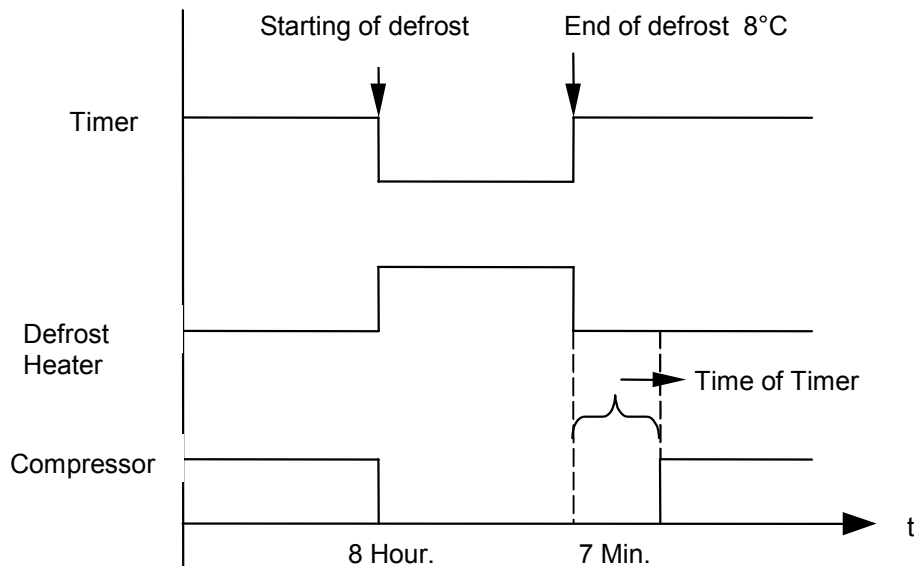
|                           |                                   |
|---------------------------|-----------------------------------|
| <b>VESTEL WHITE GOODS</b> | <b>CUSTOMER</b><br><b>SUPPORT</b> |
|---------------------------|-----------------------------------|

|                              |                        |                            |
|------------------------------|------------------------|----------------------------|
| <b>VESTEL</b><br>WHITE GOODS | <b>VESTEL NO-FROST</b> | <b>JUNE</b><br><b>2003</b> |
|                              | <b>MAIN COMPONENTS</b> |                            |

**WORKING PRINCIPLE OF TIMER:**

•Position of timer is 3-4 when the first plug on. (see wire diagram)  
In this case, timer motor, evaporator fan motor and compressor will be run together.

•Perform one cycle (360°) in 8 hours. (that is the accumulated working hours of the compressor) at the end of the cycle, timer change its position from 3-4 to 3-2 and defrost operation begins. At this position, AI tube heater(120W), drain hose heater (5w) and drain tray heater are energized until the evaporator temperature reach to 8°C (the timer motor will stop).



**TIME CHART**

When the bi-metal thermostat reaches to 8°C, it will switch off the defrost heaters and the timer motor will start to run again. After 7 minutes, the rproduct will start cooling.

|                           |                                   |
|---------------------------|-----------------------------------|
| <b>VESTEL WHITE GOODS</b> | <b>CUSTOMER</b><br><b>SUPPORT</b> |
|---------------------------|-----------------------------------|

|                              |                        |                            |
|------------------------------|------------------------|----------------------------|
| <b>VESTEL</b><br>WHITE GOODS | <b>VESTEL NO-FROST</b> | <b>JUNE</b><br><b>2003</b> |
|                              | <b>MAIN COMPONENTS</b> |                            |

**WORKING PRINCIPLE OF TIMER:(Continue)**

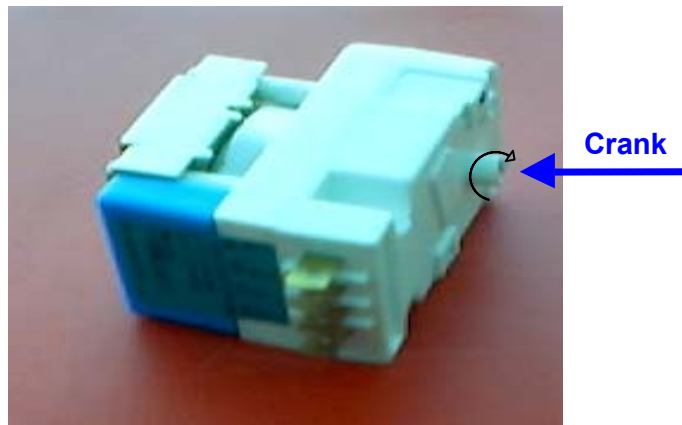
**Note that:**

If the bi-metal thermostat is get broken or short circuit then the defrost operation will not be stopped although the freezer temperature reaches to 8 °C. So defrost heaters continue to run. To prevent overheating, thermal fuse will be blow when the temperature reached to 76 °C inside the evaporator section. If the thermal fuse blow off, the refrigerator will stop all the functions(the compressor will not run and the defrost heaters will not heat). In this case, thermal fuse and bi-metal thermostat must be changed with a new one. You can check the function of bi-metal thermostat(see next page)

At the end of the defrost operation, position of timer contact is still on 3-2 and keeps this position 7.5 minutes to drain water from the evaporator completely. After 7.5 minutes, timer contact will change it's position from 3-2 to 3-4.

**MANUAL DEFROST:**

If you turn the timer knob by manually, you can hear two crack sounds. First crack sound change the timer position from 3-4 to 3-2 (Defrost operation begins). Second crack sound change the timer position after 7 minutes from 3-2 to 3-4. (Stop the defrost, compressor run).

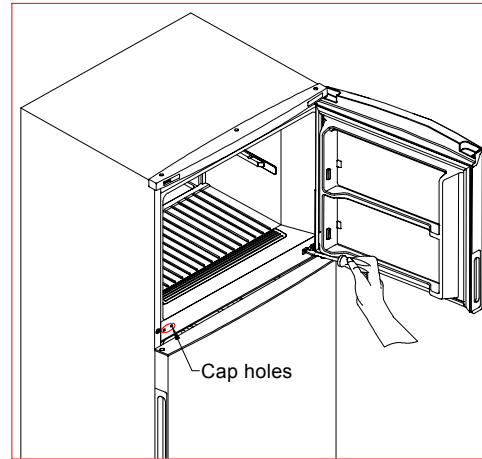


|                           |                                   |
|---------------------------|-----------------------------------|
| <b>VESTEL WHITE GOODS</b> | <b>CUSTOMER</b><br><b>SUPPORT</b> |
|---------------------------|-----------------------------------|

|                              |                                       |                            |
|------------------------------|---------------------------------------|----------------------------|
| <b>VESTEL</b><br>WHITE GOODS | <b>VESTEL NO-FROST</b>                | <b>JUNE</b><br><b>2003</b> |
|                              | <b>CHANGING THE DOORWAY DIRECTION</b> |                            |

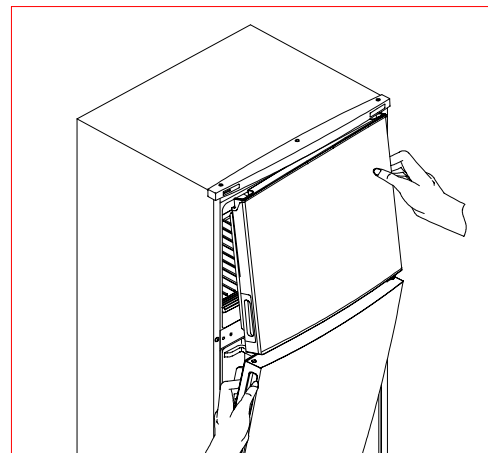
**STEP 1:**

Unscrew the two screws which are fixing the middle hinge and one screw which is located near the middle hinge.



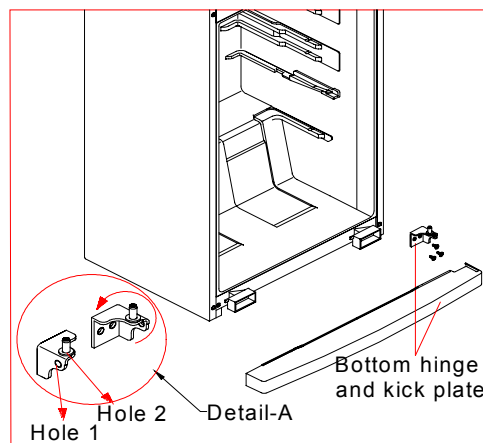
**STEP 2:**

Dismantle the refrigerator and freezer door from cabinet by pulling towards to you together with the middle hinge.



**STEP 3:**

Take off the kick plate by pulling forward. Unscrew the bottom hinge fixing screws and remove it. Unscrew the pin of hinge from Hole 1, rotate the bottom hinge 90° ccw and screw the pin to Hole 2. (see detail A) Then assemble the hinge to bottom left side of refrigerator.

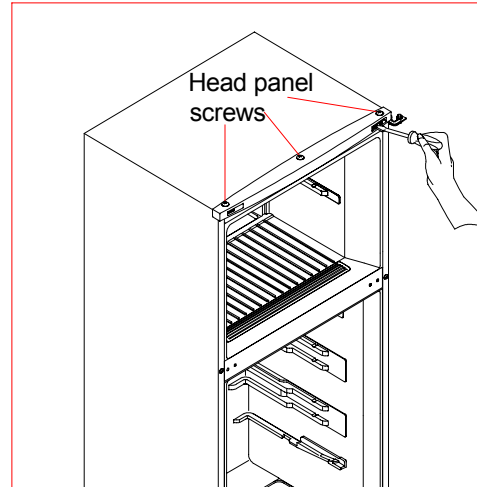


|                           |                                   |
|---------------------------|-----------------------------------|
| <b>VESTEL WHITE GOODS</b> | <b>CUSTOMER</b><br><b>SUPPORT</b> |
|---------------------------|-----------------------------------|

|                              |                                       |                            |
|------------------------------|---------------------------------------|----------------------------|
| <b>VESTEL</b><br>WHITE GOODS | <b>VESTEL NO-FROST</b>                | <b>JUNE</b><br><b>2003</b> |
|                              | <b>CHANGING THE DOORWAY DIRECTION</b> |                            |

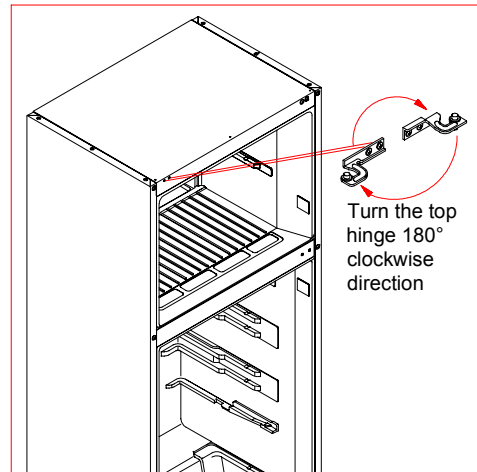
**STEP 4:**

Remove the head panel hinge cover and dismantle the upper hinge. Unscrew the pin of hinge, turn the hinge by 180° cw and screw the pin from the bottom of the hinge. Then unscrew three screws which are fixing the head panel and remove the head panel.



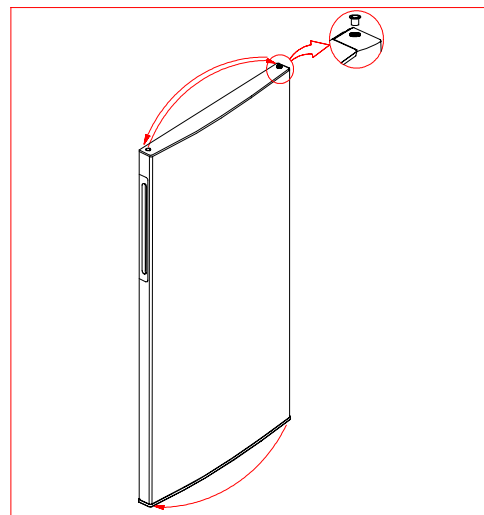
**STEP 5:**

Screw the upper hinge to the left side and assemble the head panel. Reassemble the panel hinge covers by changing their places



**STEP 6:**

Take out the bushing and bushing cap and reassemble them by changing their places. Take out bushing and bottom stopper and reassemble them by changing their places.



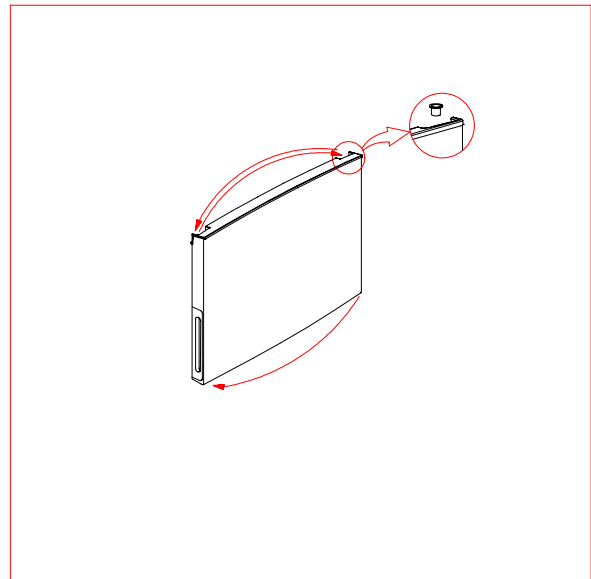
Refrigerator Door Assy

|                           |                                   |
|---------------------------|-----------------------------------|
| <b>VESTEL WHITE GOODS</b> | <b>CUSTOMER</b><br><b>SUPPORT</b> |
|---------------------------|-----------------------------------|

|                              |                                       |                            |
|------------------------------|---------------------------------------|----------------------------|
| <b>VESTEL</b><br>WHITE GOODS | <b>VESTEL NO-FROST</b>                | <b>JUNE</b><br><b>2003</b> |
|                              | <b>CHANGING THE DOORWAY DIRECTION</b> |                            |

**STEP 7:**

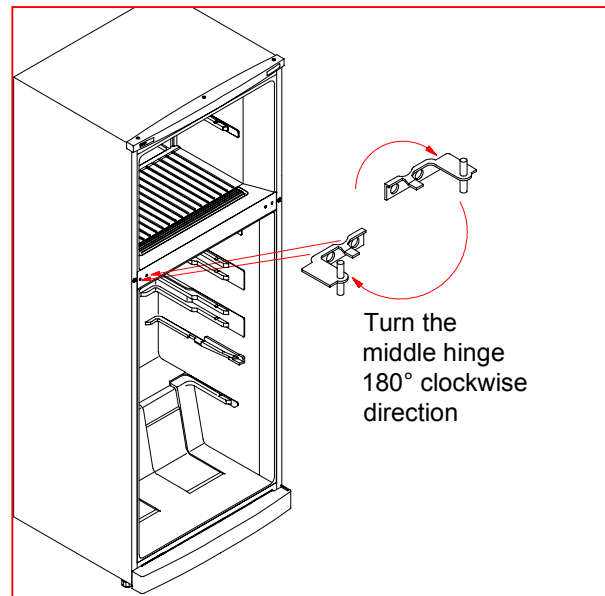
Take out bushing and bushing caps and reassemble them by changing their places. Take out bushing and reassemble it by changing its' place. Remove the right stopper and assemble the left stopper to the left side



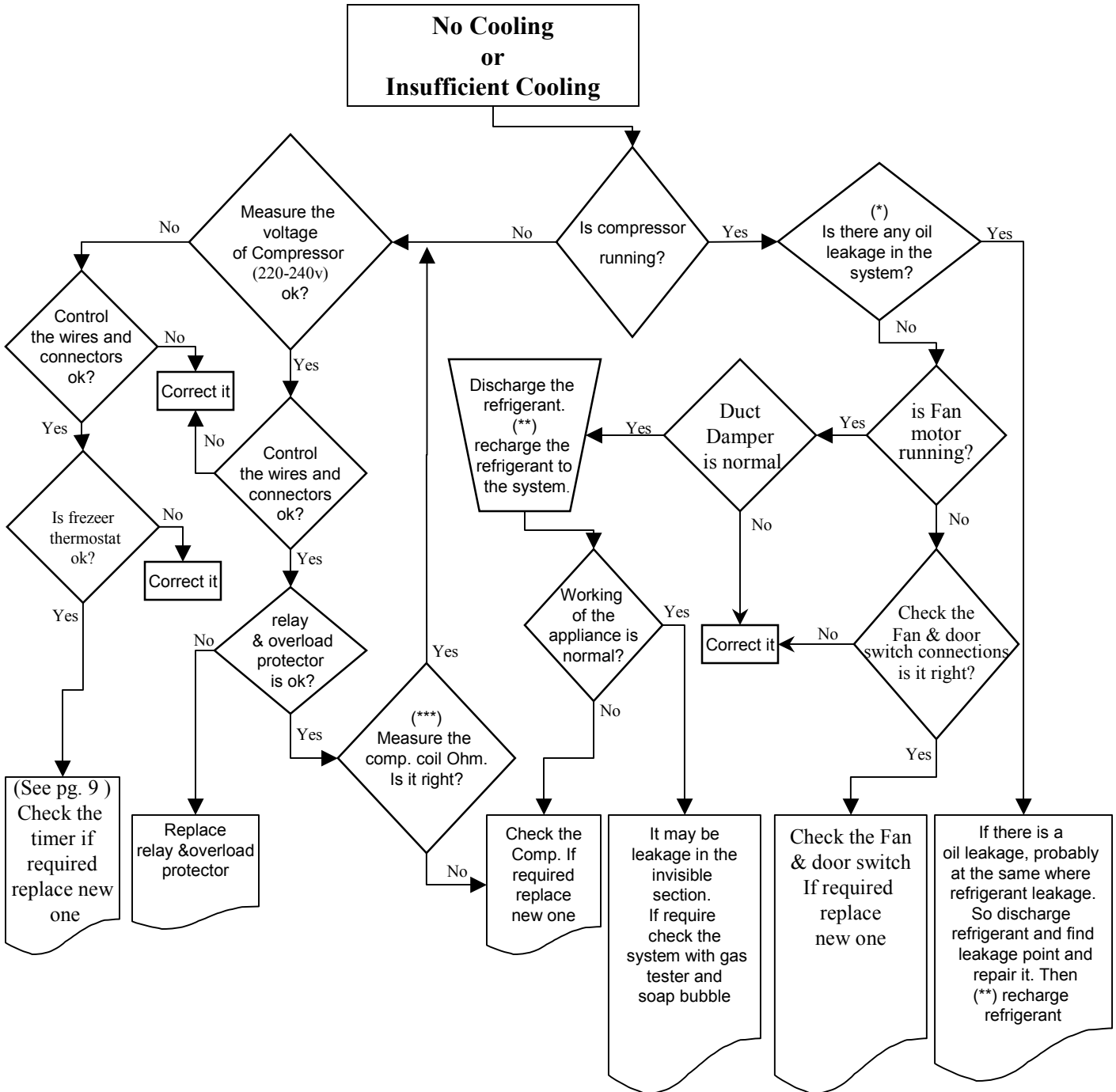
Freezer Door Assy

**STEP 8:**

Assemble the freezer door and refrigerator door with the middle hinge, fix the middle hinge by tightening the screws. Finally, by using a knife cut left side of the kick plate and assemble it.



|                           |                                   |
|---------------------------|-----------------------------------|
| <b>VESTEL WHITE GOODS</b> | <b>CUSTOMER</b><br><b>SUPPORT</b> |
|---------------------------|-----------------------------------|



(\*) Check all of the visible pipes and welding points against oil leakage  
 (\*\*) Before recharging the refrigerant to the system; Dryer must be replaced and at least 30 minutes vacuum must be done  
 (\*\*\*) Comp. Main coil and auxiliary coil are 10 Ω and 15 Ω respectively (At 25 °C ambient temp.)



|                              |                            |                            |
|------------------------------|----------------------------|----------------------------|
| <b>VESTEL</b><br>WHITE GOODS | <b>VESTEL NO-FROST</b>     | <b>JUNE</b><br><b>2003</b> |
|                              | <b>FREEZER COMPARTMENT</b> |                            |

### Replacement of Freezer Lamp

Insert a screwdriver into a groove and pull the lamp cover.



Loosen the lamp and replace it.



|                           |                                   |
|---------------------------|-----------------------------------|
| <b>VESTEL WHITE GOODS</b> | <b>CUSTOMER</b><br><b>SUPPORT</b> |
|---------------------------|-----------------------------------|

|                              |                            |                            |
|------------------------------|----------------------------|----------------------------|
| <b>VESTEL</b><br>WHITE GOODS | <b>VESTEL NO-FROST</b>     | <b>JUNE</b><br><b>2003</b> |
|                              | <b>FREEZER COMPARTMENT</b> |                            |

### Replacement of Freezer Thermostat

Remove the ice-matic group and fast freezing partition. Then unscrew the three bolts with screwdriver.  
(KA 40\*14 WN 1411(INOX) EJOT)  
And then remove out icematic holder.

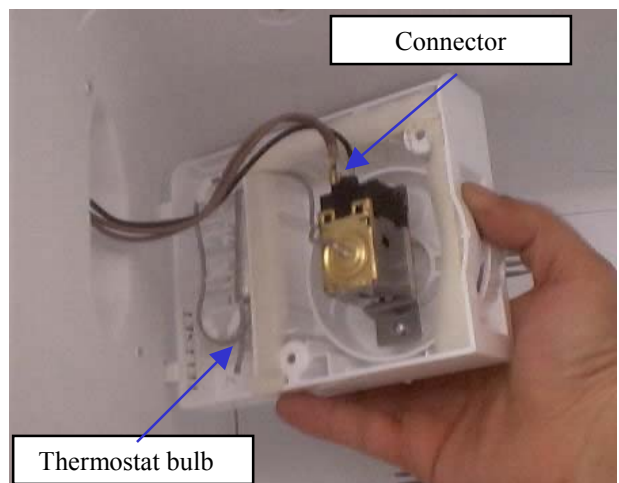


Unscrew the 2 thermostat cover screws.  
(PLS KA 40\*13(INOX-S.UÇ) SUS 430)

Remove the thermostat cover by pulling forward lightly.



Disconnect the housing and take out the thermostat with its cover.



|                           |                                   |
|---------------------------|-----------------------------------|
| <b>VESTEL WHITE GOODS</b> | <b>CUSTOMER</b><br><b>SUPPORT</b> |
|---------------------------|-----------------------------------|

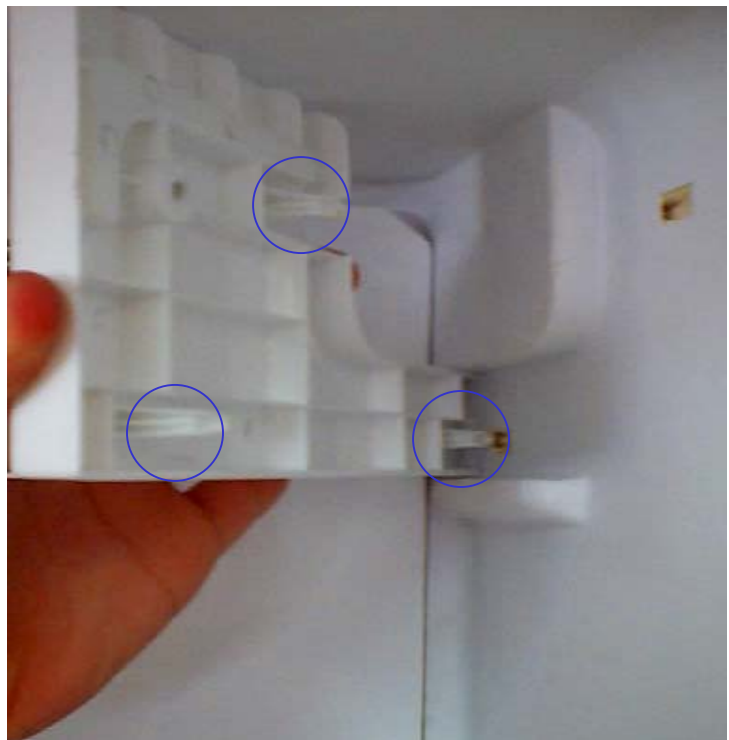
|                              |                            |                            |
|------------------------------|----------------------------|----------------------------|
| <b>VESTEL</b><br>WHITE GOODS | <b>VESTEL NO-FROST</b>     | <b>JUNE</b><br><b>2003</b> |
|                              | <b>FREEZER COMPARTMENT</b> |                            |

**Dismantle of Freezer Partition:**

Unscrew the bolt.  
(KA 40\*14 WN 1411(INOX) EJOT)



Pull forward to freezer partition  
by hand. Then take it out.



|                           |                                   |
|---------------------------|-----------------------------------|
| <b>VESTEL WHITE GOODS</b> | <b>CUSTOMER</b><br><b>SUPPORT</b> |
|---------------------------|-----------------------------------|

|                              |                            |                            |
|------------------------------|----------------------------|----------------------------|
| <b>VESTEL</b><br>WHITE GOODS | <b>VESTEL NO-FROST</b>     | <b>JUNE</b><br><b>2003</b> |
|                              | <b>FREEZER COMPARTMENT</b> |                            |

**Replacement of Freezer Lamp Box:**

Unscrew the bolt which is located at the bottom of the multiflow cover .  
(PLS KA 40\*13(INOX-S.UÇ)SUS 430)



Then take out the cover by pulling from bottom to forward and put on the right side without disconnect it's connection.



|                           |                                   |
|---------------------------|-----------------------------------|
| <b>VESTEL WHITE GOODS</b> | <b>CUSTOMER</b><br><b>SUPPORT</b> |
|---------------------------|-----------------------------------|

|                              |                            |                            |
|------------------------------|----------------------------|----------------------------|
| <b>VESTEL</b><br>WHITE GOODS | <b>VESTEL NO-FROST</b>     | <b>JUNE</b><br><b>2003</b> |
|                              | <b>FREEZER COMPARTMENT</b> |                            |

**Replacement of Freezer Multi-flow Cover:**

Unscrew the 1 bolt on the multi-flow cover  
(KA 40\*14 WN 1411(INOX) EJOT)

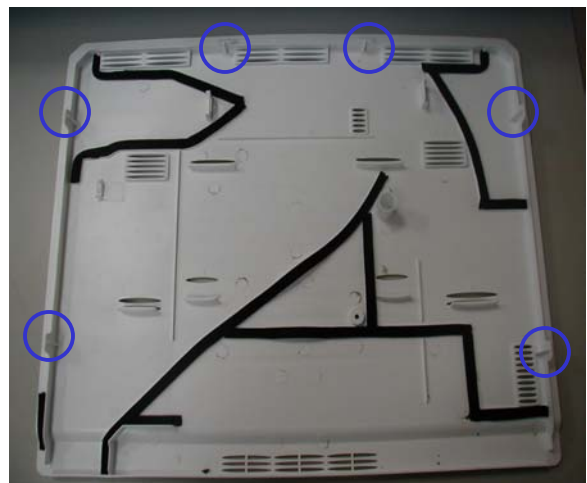


Then detach the multi-flow cover by pulling  
from bottom to forward.



Disconnect to lamp socket. And remove out  
the cover.

Not that: There are 6 catchers and isolation  
sponges on the back side of the cover.  
During dismantling of the cover, be  
careful not to damage them.

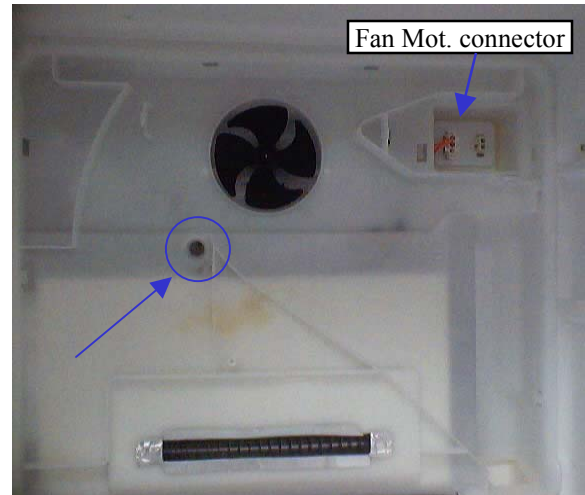


|                           |                                   |
|---------------------------|-----------------------------------|
| <b>VESTEL WHITE GOODS</b> | <b>CUSTOMER</b><br><b>SUPPORT</b> |
|---------------------------|-----------------------------------|

|                              |                            |                            |
|------------------------------|----------------------------|----------------------------|
| <b>VESTEL</b><br>WHITE GOODS | <b>VESTEL NO-FROST</b>     | <b>JUNE</b><br><b>2003</b> |
|                              | <b>FREEZER COMPARTMENT</b> |                            |

**Replacement of Freezer Multi-Flow Assy :**

Unscrew the bolt fixing the freezer multi-flow assembly.  
(KA 40\*14 WN 1411(INOX) EJOT)



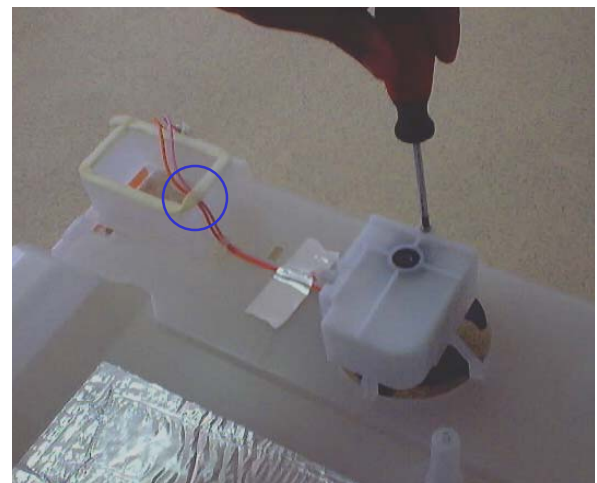
Disconnect the fan motor connector.

Take out the multi-flow assy. By pushing from The catchers ( located upper and sides) with screw driver or by hand.



Dismantle fan motor cover by removing screw and detach the fan blower spring, and then take out to fan motor.

**Note That :** Fan motor wires must be pass under the sponge and aluminium tape as shown in picture.



|                           |                         |
|---------------------------|-------------------------|
| <b>VESTEL WHITE GOODS</b> | <b>CUSTOMER SUPPORT</b> |
|---------------------------|-------------------------|

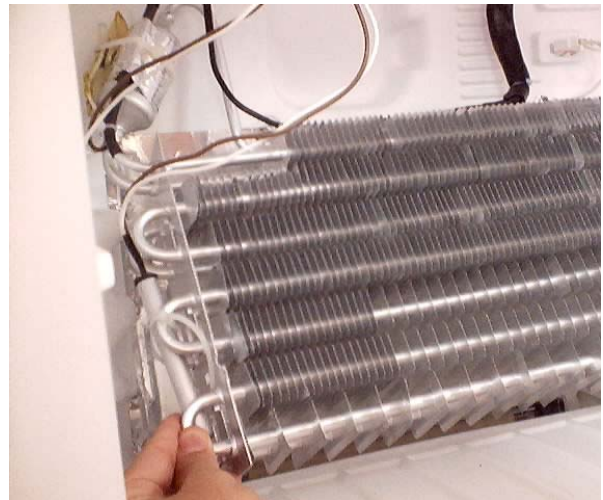
|                              |                            |                            |
|------------------------------|----------------------------|----------------------------|
| <b>VESTEL</b><br>WHITE GOODS | <b>VESTEL NO-FROST</b>     | <b>JUNE</b><br><b>2003</b> |
|                              | <b>FREEZER COMPARTMENT</b> |                            |

**Replacement of Evaporator:**

**Remove two evaporator fixing screws and fixing plastics**



**Slightly lift the evaporator and pull forward with minimizing the pipe deformation**



**NOTE: When replacement of evaporator the pipes must be Cut from the two welded points as shown in the picture. After assembling the Evaporator, welding points must be covered by the rubber.**

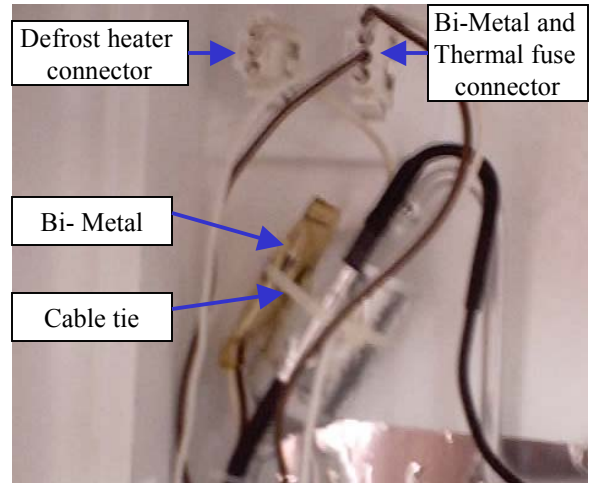


|                           |                         |
|---------------------------|-------------------------|
| <b>VESTEL WHITE GOODS</b> | <b>CUSTOMER SUPPORT</b> |
|---------------------------|-------------------------|

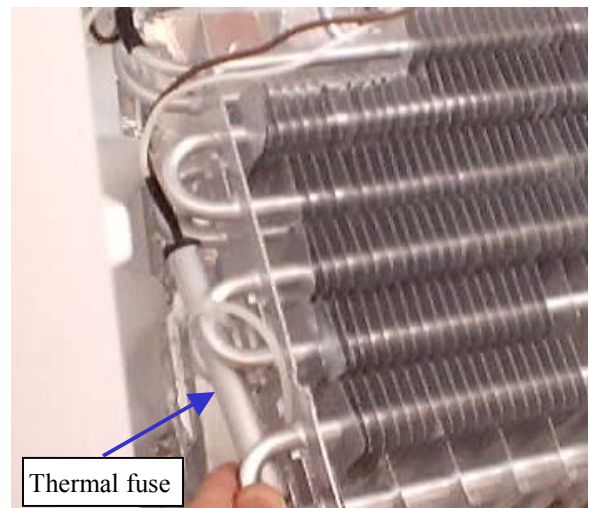
|                              |                            |                            |
|------------------------------|----------------------------|----------------------------|
| <b>VESTEL</b><br>WHITE GOODS | <b>VESTEL NO-FROST</b>     | <b>JUNE</b><br><b>2003</b> |
|                              | <b>FREEZER COMPARTMENT</b> |                            |

**Replacement of Bi-Metal & Thermal Fuse Assy.:**

**Disconnect to Bi-Metal & thermal fuse assy.  
Cut off the cable tie and take out the Bi-Metal**



**Remove the thermal fuse by pulling  
which mounted on the left side of the evaporator.  
Take out the thermal fuse and bi-metal assy .**



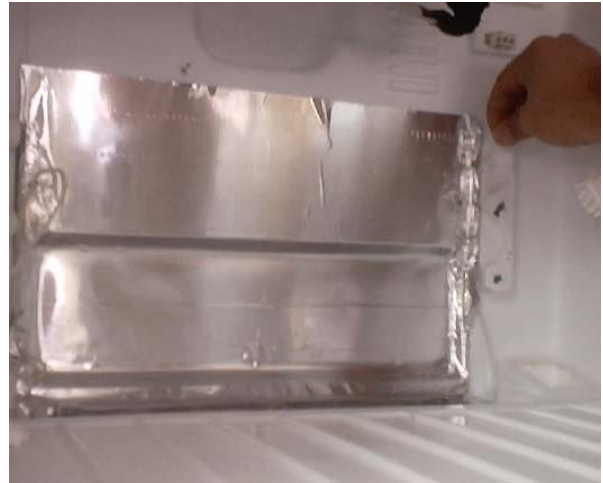
|                           |                                   |
|---------------------------|-----------------------------------|
| <b>VESTEL WHITE GOODS</b> | <b>CUSTOMER</b><br><b>SUPPORT</b> |
|---------------------------|-----------------------------------|



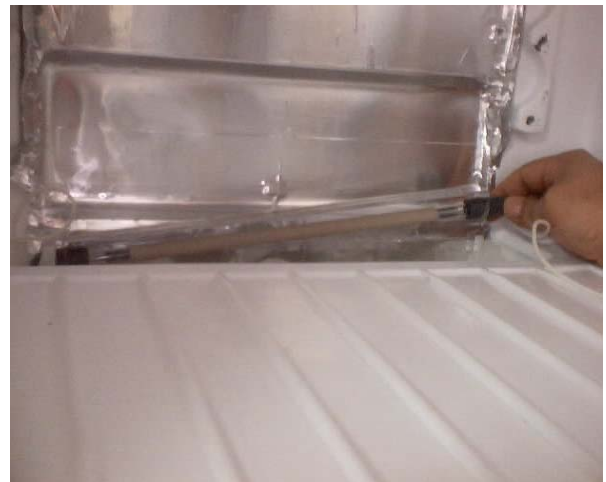
|                              |                            |                            |
|------------------------------|----------------------------|----------------------------|
| <b>VESTEL</b><br>WHITE GOODS | <b>VESTEL NO-FROST</b>     | <b>JUNE</b><br><b>2003</b> |
|                              | <b>FREEZER COMPARTMENT</b> |                            |

**Replacement of Radiant Heater:**

Detach the aluminum tape where radiant heater wires passing back side of it. And take out the cables.



Then remove the heater



**NOTE :** During the replacement of the radiant heater be careful not to damage the cables which must be pass under the aluminum tape and shouldn't be intersect evaporator fixing screws. Otherwise it may be damage and causes short circuit.



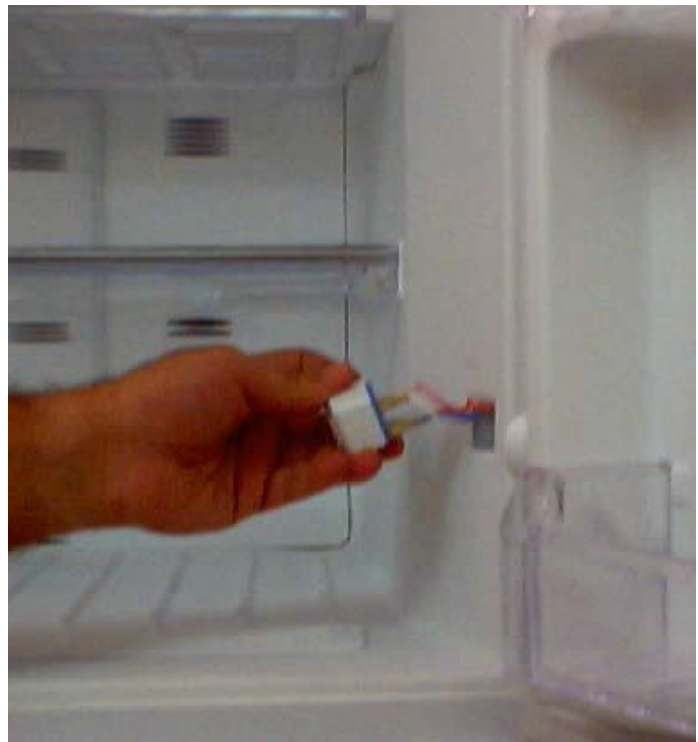
|                           |                                   |
|---------------------------|-----------------------------------|
| <b>VESTEL WHITE GOODS</b> | <b>CUSTOMER</b><br><b>SUPPORT</b> |
|---------------------------|-----------------------------------|

|                              |                                   |                            |
|------------------------------|-----------------------------------|----------------------------|
| <b>VESTEL</b><br>WHITE GOODS | <b>VESTEL NO-FROST</b>            | <b>JUNE</b><br><b>2003</b> |
|                              | <b>REPLACEMENT OF DOOR SWITCH</b> |                            |

Insert a screwdriver into the gap and pull the door switch.



Disconnect the connectors. And take out the door switch.



|                           |                                   |
|---------------------------|-----------------------------------|
| <b>VESTEL WHITE GOODS</b> | <b>CUSTOMER</b><br><b>SUPPORT</b> |
|---------------------------|-----------------------------------|

|                              |                                 |                            |
|------------------------------|---------------------------------|----------------------------|
| <b>VESTEL</b><br>WHITE GOODS | <b>VESTEL NO-FROST</b>          | <b>JUNE</b><br><b>2003</b> |
|                              | <b>REFRIGERATOR COMPARTMENT</b> |                            |

**Replacement of Refrigerator Lamp Cover:**

Insert a screwdriver into the groove below the lamp cover and pull the lamp cover.



Loosen the lamp and replace it.



|                           |                                   |
|---------------------------|-----------------------------------|
| <b>VESTEL WHITE GOODS</b> | <b>CUSTOMER</b><br><b>SUPPORT</b> |
|---------------------------|-----------------------------------|

|                              |                                 |                            |
|------------------------------|---------------------------------|----------------------------|
| <b>VESTEL</b><br>WHITE GOODS | <b>VESTEL NO-FROST</b>          | <b>JUNE</b><br><b>2003</b> |
|                              | <b>REFRIGERATOR COMPARTMENT</b> |                            |

**Replacement of Refrigerator Thermostat Knob:**

Slightly pull the thermostat knob towards you.



When removing the thermostat knob, be careful not to damage the sponge which is prevent leakage. So if it is damaged, replace with a new one.



|                           |                                   |
|---------------------------|-----------------------------------|
| <b>VESTEL WHITE GOODS</b> | <b>CUSTOMER</b><br><b>SUPPORT</b> |
|---------------------------|-----------------------------------|

|                              |                                 |                            |
|------------------------------|---------------------------------|----------------------------|
| <b>VESTEL</b><br>WHITE GOODS | <b>VESTEL NO-FROST</b>          | <b>JUNE</b><br><b>2003</b> |
|                              | <b>REFRIGERATOR COMPARTMENT</b> |                            |

**Replacement of Refrigerator Multi-Flow Assy. :**

Unscrew the fixing bolts.  
(KA 40\*14 WN 1411(INOX) EJOT)



Push to bottom catch by a screwdriver and pull multi-flow cover towards to you



Push to right side catch by a screwdriver and pull multi-flow cover towards to you. Do same operation for the left side



|                           |                                   |
|---------------------------|-----------------------------------|
| <b>VESTEL WHITE GOODS</b> | <b>CUSTOMER</b><br><b>SUPPORT</b> |
|---------------------------|-----------------------------------|

|                              |                                 |                            |
|------------------------------|---------------------------------|----------------------------|
| <b>VESTEL</b><br>WHITE GOODS | <b>VESTEL NO-FROST</b>          | <b>JUNE</b><br><b>2003</b> |
|                              | <b>REFRIGERATOR COMPARTMENT</b> |                            |

**Replacement of Refrigerator Multi-Flow Assy. (Continue):**

Push to upper catch by a screwdriver and pull multi-flow cover towards to you



After extraction all of the catch, detach the multi-flow cover by pulling from bottom to forward.



|                           |                                   |
|---------------------------|-----------------------------------|
| <b>VESTEL WHITE GOODS</b> | <b>CUSTOMER</b><br><b>SUPPORT</b> |
|---------------------------|-----------------------------------|

|                              |                                 |                            |
|------------------------------|---------------------------------|----------------------------|
| <b>VESTEL</b><br>WHITE GOODS | <b>VESTEL NO-FROST</b>          | <b>JUNE</b><br><b>2003</b> |
|                              | <b>REFRIGERATOR COMPARTMENT</b> |                            |

**Replacement of Refrigerator Multi-Flow Assy. (Continue):**

**Pull the multi-flow cover.**



**Disconnect to connector then take out multi-flow cover.**

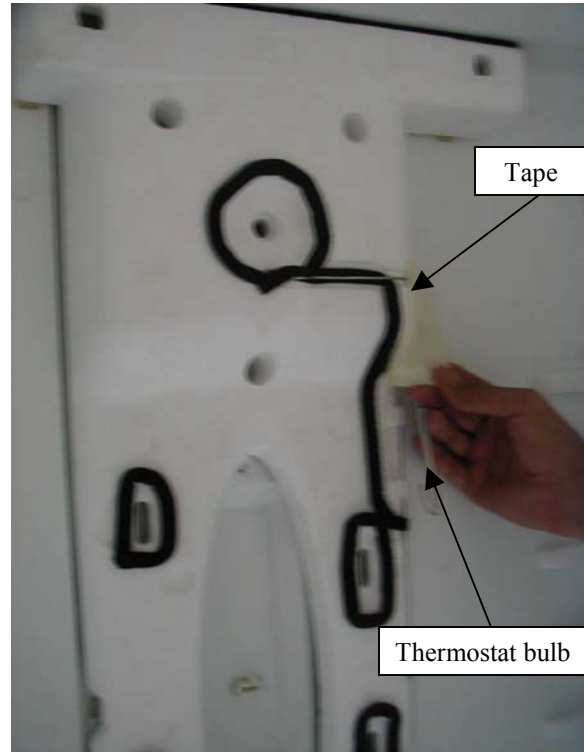


|                           |                                   |
|---------------------------|-----------------------------------|
| <b>VESTEL WHITE GOODS</b> | <b>CUSTOMER</b><br><b>SUPPORT</b> |
|---------------------------|-----------------------------------|

|                              |                                 |                            |
|------------------------------|---------------------------------|----------------------------|
| <b>VESTEL</b><br>WHITE GOODS | <b>VESTEL NO-FROST</b>          | <b>JUNE</b><br><b>2003</b> |
|                              | <b>REFRIGERATOR COMPARTMENT</b> |                            |

**Replacement of Refrigerator Multi-Flow Assy. (Continue):**

Remove the tape which is fixing the thermostat bulb.



Straight to the bulb and remove it from multi flow insulation then take out multi-flow insulation.



|                           |                                   |
|---------------------------|-----------------------------------|
| <b>VESTEL WHITE GOODS</b> | <b>CUSTOMER</b><br><b>SUPPORT</b> |
|---------------------------|-----------------------------------|



|                              |                                 |                            |
|------------------------------|---------------------------------|----------------------------|
| <b>VESTEL</b><br>WHITE GOODS | <b>VESTEL NO-FROST</b>          | <b>JUNE</b><br><b>2003</b> |
|                              | <b>REFRIGERATOR COMPARTMENT</b> |                            |

**Replacement of Dumper Thermostat:**

Unscrew the dumper thermostat fixing screws and take out it by pulling forward.



**Note That :** When dismantle the multi-flow insulation be careful not to damage the sponge which is prevent leakage. So if it is damaged, replace with a new one.



Carry out the reassemble operations in reverse order.

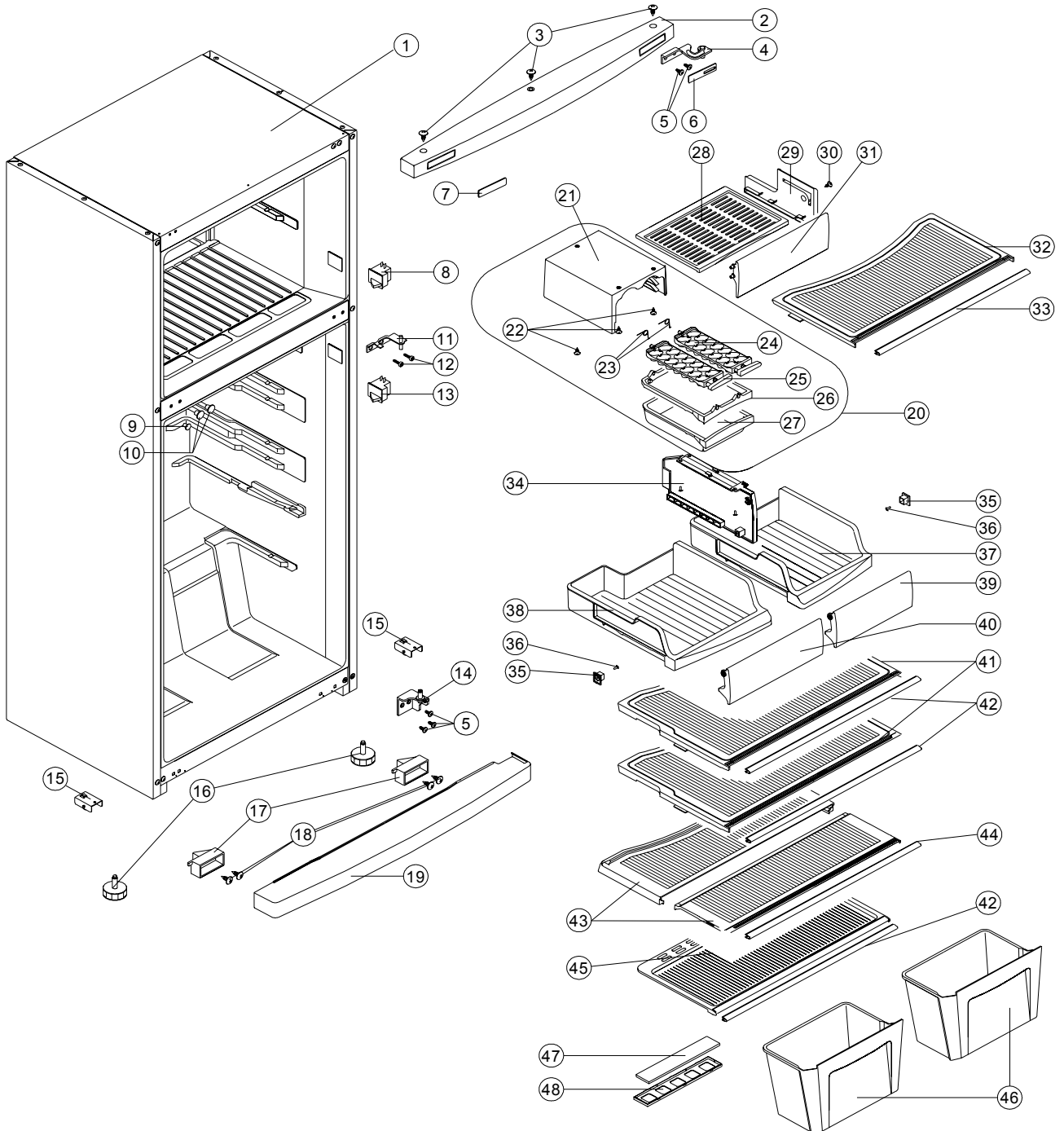


|                           |                                   |
|---------------------------|-----------------------------------|
| <b>VESTEL WHITE GOODS</b> | <b>CUSTOMER</b><br><b>SUPPORT</b> |
|---------------------------|-----------------------------------|

**VESTEL**  
**WHITE GOODS**

**VESTEL NO-FROST**  
**INTERIOR PARTS**

**JUNE**  
**2003**



**VESTEL WHITE GOODS**

**CUSTOMER**  
**SUPPORT**

|                               |                            |                      |
|-------------------------------|----------------------------|----------------------|
| <b>VESTEL<br/>WHITE GOODS</b> | <b>VESTEL NO-FROST</b>     | <b>JUNE<br/>2003</b> |
|                               | <b>INTERIOR PARTS LIST</b> |                      |

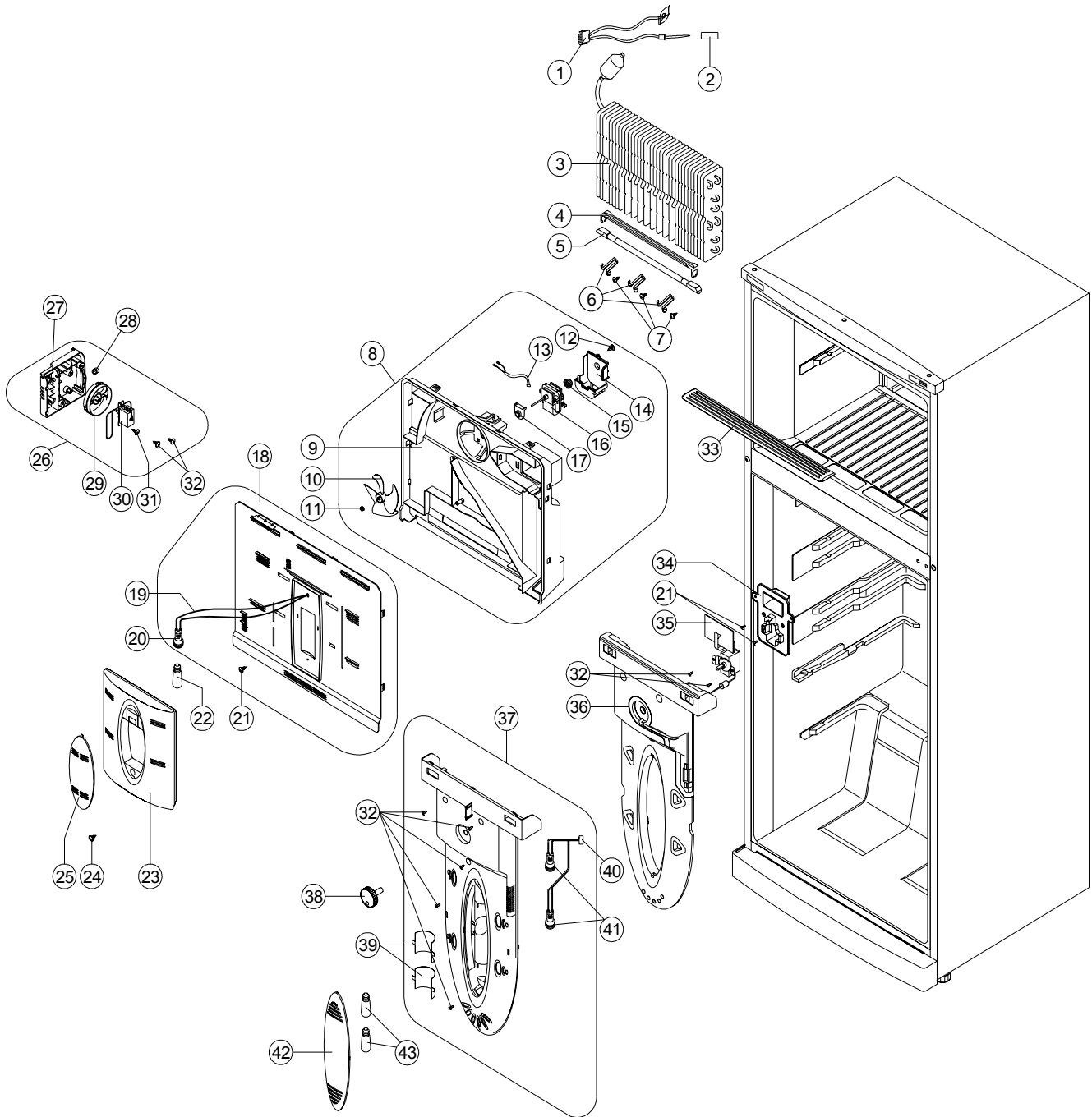
| <b>NO</b> | <b>CODE</b> | <b>PART NAME</b>                              | <b>RF 47T</b> |
|-----------|-------------|-----------------------------------------------|---------------|
| 1         | 20126026    | ASSY.URT CAB/465T                             | 1             |
| 2         | 40007004    | HEAD PANEL GR. /455                           | 1             |
| 3         | 35000743    | SCREW 4.2*9.5 DIN 7981 YSB                    | 3             |
| 4         | 35004874    | TOP HINGE DYED/345P (PÇ.6,9)                  | 1             |
| 5         | 35000714    | SCREW M5*14 WN 1342-H EJOT                    | 5             |
| 6         | 40002257    | HEAD PANEL CAP/RIGHT                          | 1             |
| 7         | 40002258    | HEAD PANEL CAP/LEFT                           | 1             |
| 8         | 30013461    | F DOOR LAMP SWITCH/465                        | 1             |
| 9         | 35007141    | MIDDLE HINGE/345S                             | 1             |
| 10        | 35001709    | SCREW M5*14 WN 1342-H EJOT DYED               | 2             |
| 11        | 30013521    | R DOOR LAMP SWITCH/465                        | 1             |
| 12        | 40012428    | CAP SMALL                                     | 1             |
| 13        | 40004843    | CAP BIG                                       | 2             |
| 14        | 35004872    | BOTTOM HINGE/345 (PÇ.6,9)                     | 1             |
| 15        | 35003056    | FRONT WHEEL GR.                               | 2             |
| 16        | 45000563    | STATIONARY FOOT                               | 2             |
| 17        | 40002262    | KICK PLATE HOLDER                             | 2             |
| 18        | 35000707    | SCREW 3.5*13 DIN 7981 YSB                     | 4             |
| 19        | 40012543    | KICK PLATE/455P                               | 1             |
| 20        | 40004115    | ICEMATIC GR./465                              | 1             |
| 21        | 40007283    | ICE TRAY COVER                                | 1             |
| 22        | 35001678    | SCREW 3.5*13 DIN 7981 YSB                     | 3             |
| 23        | 35000731    | ICE TRAY SPRING                               | 2             |
| 24        | 40002281    | ICE TRAY RIGHT                                | 1             |
| 25        | 40002282    | ICE TRAY LEFT                                 | 1             |
| 26        | 40002280    | ICE TRAY HOLDER                               | 1             |
| 27        | 40002279    | ICE BOX                                       | 1             |
| 28        | 40004091    | QUICK FREEZING SHELF/465 (TRSPRNT-BLUE)       | 1             |
| 29        | 40004118    | F PARTITION                                   | 1             |
| 30        | 35001678    | SCREW KA 40*14 WN 1411(INOX)EJOT              | 1             |
| 31        | 40004092    | QUICK FREEZING SHELF COVER/465 (TRSPRNT-BLUE) | 1             |
| 32        | 40007679    | F COMPARTMENT SHELF/465 (TRSPRNT-BLUE)        | 1             |
| 33        | 35001894    | F COMPARTMENT SHELF TRIM/465 (INOX)           | 1             |
| 34        | 40004138    | CHILLER SHELF PARTITION/465                   | 1             |
| 35        | 40004139    | CHILLER SHELF STOPPER                         | 2             |
| 36        | 35001678    | SCREW KA 40*14 WN 1411(INOX)EJOT              | 2             |
| 37        | 40004130    | CHILLER SHELF RIGHT/465 (TRSPRNT-BLUE)        | 1             |
| 38        | 40004131    | CHILLER SHELF LEFT/465 (TRSPRNT-BLUE)         | 1             |
| 39        | 40004132    | CHILLER SHELF COVER RIGHT/465 (TRSPRNT-BLUE)  | 1             |
| 40        | 40004133    | CHILLER SHELF COVER LEFT/465 (TRSPRNT-BLUE)   | 1             |
| 41        | 40007678    | R COMPARTMENT SHELF/465 (TRSPRNT-BLUE)        | 2             |
| 42        | 35001895    | R COMPARTMENT SHELF TRIM/465 (INOX)           | 3             |
| 43        | 40007677    | MAGIC SHELF FRONT+BACK/465 (TRSPRNT-BLUE)     | 1             |
| 44        | 35001896    | MAGIC SHELF TRIM/465 (INOX)                   | 1             |
| 45        | 40007680    | CRISPER COVER/465 (TRSPRNT-BLUE)              | 1             |
| 46        | 40004106    | CRISPER/465 (TRSPRNT-BLUE)                    | 2             |
| 47        | 45002270    | FILTER/465 (BLUE)                             | 1             |
| 48        | 40004128    | FILTER HOLDER/465                             | 1             |

|                           |                             |
|---------------------------|-----------------------------|
| <b>VESTEL WHITE GOODS</b> | <b>CUSTOMER<br/>SUPPORT</b> |
|---------------------------|-----------------------------|

**VESTEL  
WHITE GOODS**

**VESTEL NO-FROST  
MULTIFLOW PARTS**

**JUNE  
2003**



**VESTEL WHITE GOODS**

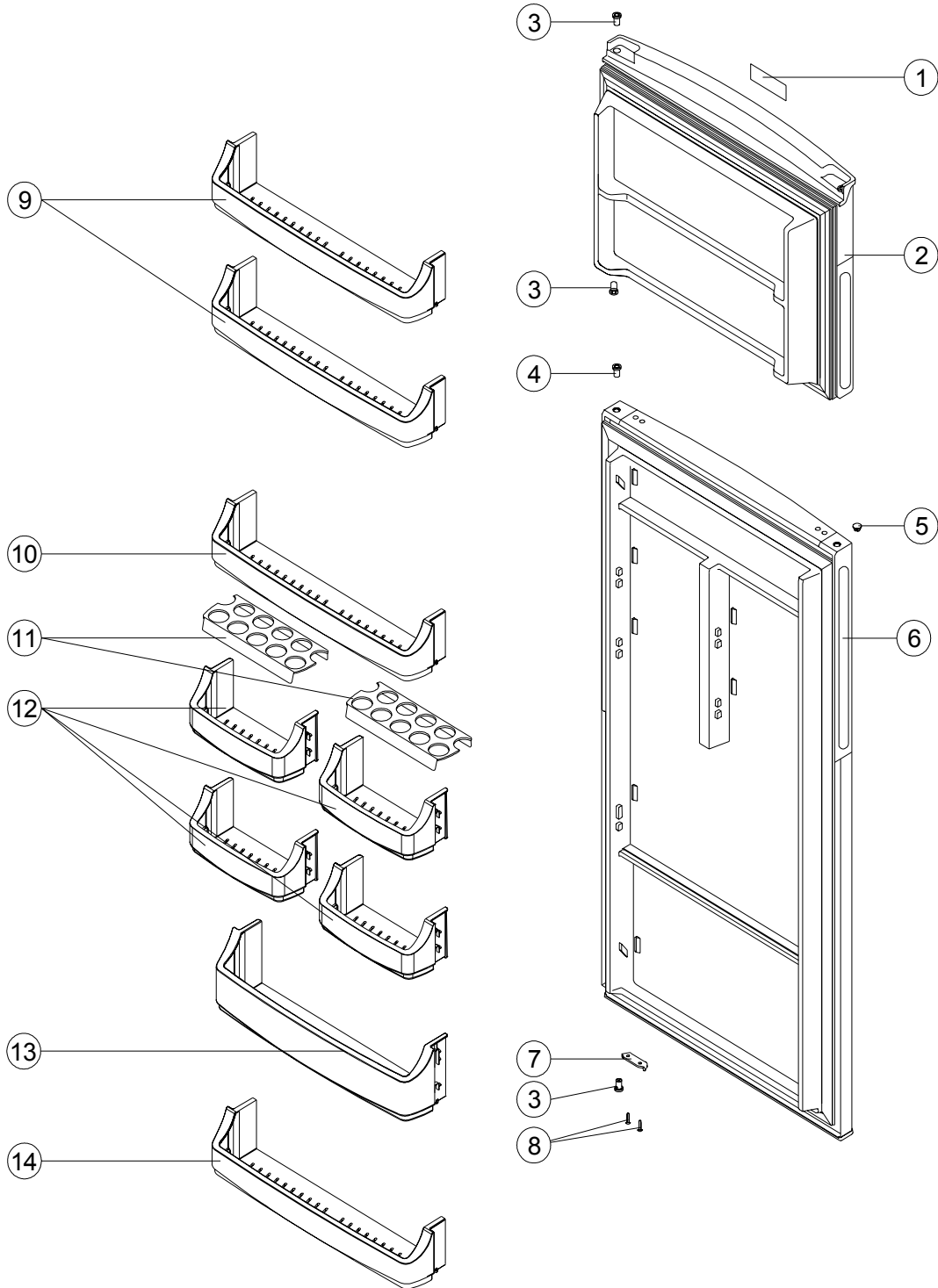
**CUSTOMER  
SUPPORT**

|                               |                             |                      |
|-------------------------------|-----------------------------|----------------------|
| <b>VESTEL<br/>WHITE GOODS</b> | <b>VESTEL NO-FROST</b>      | <b>JUNE<br/>2003</b> |
|                               | <b>MULTIFLOW PARTS LIST</b> |                      |

| <b>NO</b> | <b>CODE</b> | <b>PART NAME</b>                        | <b>RF 47T</b> |
|-----------|-------------|-----------------------------------------|---------------|
| 1         | 30013872    | THERMAL FUSE+BIMETAL THERM. GR./465     | 1             |
| 2         | 35003254    | THERMAL FUSE PIPE/465                   | 1             |
| 3         | 35006212    | FIN EVAP./465T                          | 1             |
| 4         | 35001888    | RADIANT HEATER BRACKET                  | 1             |
| 5         | 30018732    | RADIANT HEATER 150W/220V/465 (FOSHAN)   | 1             |
| 6         | 40004101    | FIN EVAP.FIXING PLASTIC/465             | 3             |
| 7         | 35003482    | SCREW PLS KA 40*13(INOX-S.UÇ)SUS 430    | 3             |
| 8         | 20113621    | AIR DUCT GROUP/465                      | 1             |
| 9         | 40004102    | AIR DUCT/465                            | 1             |
| 10        | 40011041    | FAN BLOWER/465                          | 1             |
| 11        | 35001893    | FAN BLOWER SPRING                       | 1             |
| 12        | 35001678    | SCREW KA 40*14 WN 1411(INOX) EJOT       | 1             |
| 13        | 30007905    | WIRING HARNESS/FAN MOTOR/455            | 1             |
| 14        | 40004111    | F FAN MOTOR COVER/465                   | 1             |
| 15        | 40004109    | FAN MOTOR DAMPER-BACK                   | 1             |
| 16        | 30009680    | F FAN MOTOR/465                         | 1             |
| 17        | 40004110    | FAN MOTOR DAMPER-FRONT                  | 1             |
| 18        | 40011064    | F MULTIFLOW COVER GR./465 (EPDM)        | 1             |
| 19        | 30009681    | F WIRING ASSY.LAMP/465                  | 1             |
| 20        | 30007907    | LAMP HOLDER-E14                         | 1             |
| 21        | 35001678    | SCREW KA 40*14 WN 1411(INOX)EJOT        | 3             |
| 22        | 30007906    | LAMP (E14/220-240V/15W)                 | 1             |
| 23        | 40010494    | F LAMP BOX/465 (BLUE)                   | 1             |
| 24        | 35003482    | SCREW PLS KA 40*13(INOX )               | 1             |
| 25        | 40004117    | F LAMP COVER/465                        | 1             |
| 26        | 30019069    | F THERMOSTAT BOX ASSY./465N (EPDM)      | 1             |
| 27        | 40004113    | F THERMOSTAT BOX/465                    | 1             |
| 28        | 35003161    | SPRINGI/465                             | 1             |
| 29        | 40004114    | F THERMOSTAT KNOB SRGF/465              | 1             |
| 30        | 30015997    | F THERMOSTAT ATB - Y1130-GND Pacific    | 1             |
| 31        | 35003402    | SCREW KA 40*8 WN 1412(INOX)EJOT         | 1             |
| 32        | 35003482    | SCREW PLS KA 40*13(INOX )               | 9             |
| 33        | 40004119    | F SUCTION COVER/465                     | 1             |
| 34        | 20105036    | DUMPER THERMOSTAT CASE GR./465 (EPDM)   | 1             |
| 35        | 30009669    | DUMPER THERMOSTAT (XGB-X227 SAGINOMIYA) | 1             |
| 36        | 40012224    | R MULTIFLOW INSULATION GR./465          | 1             |
| 37        | 40012238    | R MULTIFLOW GR./465 (BLUE)              | 1             |
| 38        | 40011068    | R THERMOSTAT KNOB SRGF GR./465 (EPDM)   | 1             |
| 39        | 45002579    | R LAMP HEATER REFLECTOR/465-540         | 2             |
| 40        | 30009684    | R WIRING ASSY. LAMP/465                 | 1             |
| 41        | 30007907    | LAMP HOLDER-E14                         | 2             |
| 42        | 40004136    | LAMP COVER/465                          | 1             |
| 43        | 30007906    | LAMP (E14/220-240V/15W)                 | 2             |

|                           |                             |
|---------------------------|-----------------------------|
| <b>VESTEL WHITE GOODS</b> | <b>CUSTOMER<br/>SUPPORT</b> |
|---------------------------|-----------------------------|

|                               |                         |                      |
|-------------------------------|-------------------------|----------------------|
| <b>VESTEL<br/>WHITE GOODS</b> | <b>VESTEL NO-FROST</b>  | <b>JUNE<br/>2003</b> |
|                               | <b>DOOR ASSY. PARTS</b> |                      |



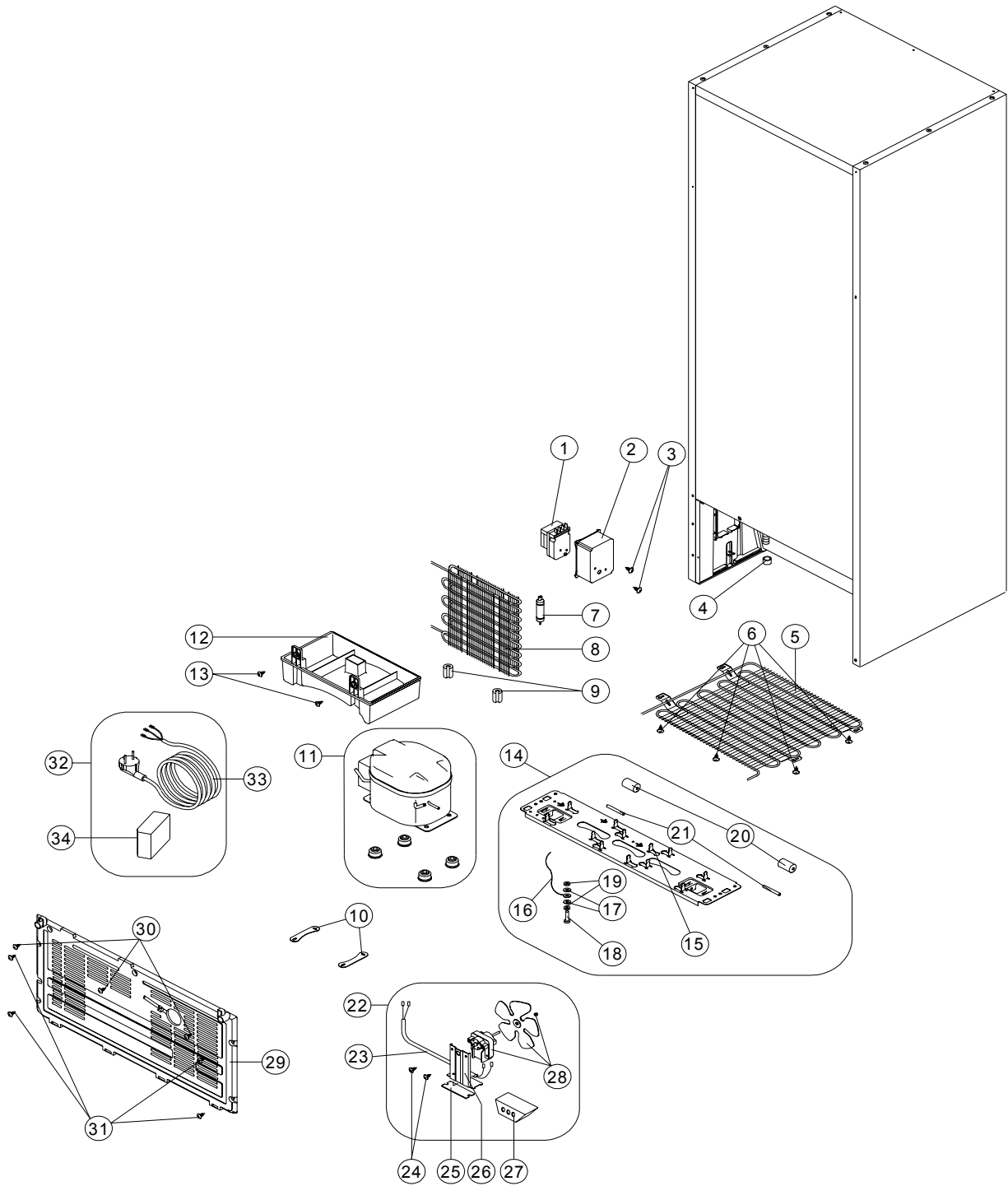
|                           |                             |
|---------------------------|-----------------------------|
| <b>VESTEL WHITE GOODS</b> | <b>CUSTOMER<br/>SUPPORT</b> |
|---------------------------|-----------------------------|

|                               |                             |                      |
|-------------------------------|-----------------------------|----------------------|
| <b>VESTEL<br/>WHITE GOODS</b> | <b>VESTEL NO-FROST</b>      | <b>JUNE<br/>2003</b> |
|                               | <b>DOORASSY. PARTS LIST</b> |                      |

| <b>NO</b> | <b>CODE</b> | <b>PART NAME</b>                       | <b>RF 47T</b> |
|-----------|-------------|----------------------------------------|---------------|
| 1         | 45002336    | LOGO CARAD                             | 1             |
| 2         | 20125996    | F DOOR ASSY./465S                      | 1             |
| 3         | 40002242    | BUSHING/345P                           | 3             |
| 4         | 40006640    | BUSHING/345S                           | 1             |
| 5         | 40002243    | BUSHING CAP                            | 1             |
| 6         | 20061905    | R DOOR ASSY./465S                      | 1             |
| 7         | 35000712    | R DOOR STOPPER                         | 1             |
| 8         | 35000714    | SCREW M5*14 WN 1342-H EJOT             | 2             |
| 9         | 40004134    | F DOOR SHELF/465 (TRSPRNT-BLUE)        | 2             |
| 10        | 40011892    | CHEESE/BUTTER SHELF/455 (TRSPRNT-BLUE) | 1             |
| 11        | 40007082    | EGG HOLDER(I+II) 455 (TRSPRNT-BLUE)    | 1             |
| 12        | 40003436    | EGG SHELF/455 (TRSPRNT-BLUE)           | 4             |
| 13        | 40003437    | BOTTLE SHELF/455 (TRSPRNT-BLUE)        | 1             |
| 14        | 40011902    | BOTTOM SHELF/455 (TRSPRNT-BLUE)        | 1             |

|                           |                             |
|---------------------------|-----------------------------|
| <b>VESTEL WHITE GOODS</b> | <b>CUSTOMER<br/>SUPPORT</b> |
|---------------------------|-----------------------------|

|                               |                        |                      |
|-------------------------------|------------------------|----------------------|
| <b>VESTEL<br/>WHITE GOODS</b> | <b>VESTEL NO-FROST</b> | <b>JUNE<br/>2003</b> |
|                               | <b>UNIT PARTS</b>      |                      |



|                           |                             |
|---------------------------|-----------------------------|
| <b>VESTEL WHITE GOODS</b> | <b>CUSTOMER<br/>SUPPORT</b> |
|---------------------------|-----------------------------|



|                               |                        |                      |
|-------------------------------|------------------------|----------------------|
| <b>VESTEL<br/>WHITE GOODS</b> | <b>VESTEL NO-FROST</b> | <b>JUNE<br/>2003</b> |
|                               | <b>UNIT PARTS LIST</b> |                      |

| <b>NO</b> | <b>CODE</b> | <b>PART NAME</b>                       | <b>RF 47T</b> |
|-----------|-------------|----------------------------------------|---------------|
| 1         | 30009685    | TIMER/465                              | 1             |
| 2         | 40004140    | TIMER BOX                              | 1             |
| 3         | 35000717    | SCREW KA 40*8 WN 1412 EJOT             | 2             |
| 4         | 40003653    | DEFROST HOSE PLUG                      | 1             |
| 5         | 35003179    | AUXILIARY CONDENSER GR./465            | 1             |
| 6         | 35000714    | SCREW M5*14 WN 1342-H EJOT             | 4             |
| 7         | 35001697    | DRYER (XH9,10GR)                       | 1             |
| 8         | 35003178    | MAIN CONDENSER/465                     | 1             |
| 9         | 40002210    | ANTI - VIBRATION (CONDENSER)           | 2             |
| 10        | 20020023    | COMP.FIXING BRACKET                    | 2             |
| 11        | 30007910    | COMPRESSOR (FG85HAK,NL9FT)             | 1             |
| 12        | 40009952    | EVAPORATING TRAY/345                   | 1             |
| 13        | 35000743    | SCREW 4.2*9.5 DIN 7981 YSB             | 2             |
| 14        | 20031737    | COMP. BASEMENT GR./465                 | 1             |
| 15        | 20020020    | COMP.BASEMENT/455                      | 1             |
| 16        | 30007904    | GROUNDING WIRE                         | 1             |
| 17        | 35000722    | WASHER 4.3*8*0.9 DIN 6798 ZNK          | 2             |
| 18        | 35000723    | SCREW M4*16 DIN 933 ZNK                | 1             |
| 19        | 35000721    | NUT M4*3.2 DIN 934 ZNK                 | 2             |
| 20        | 40002217    | WHEEL                                  | 2             |
| 21        | 35000738    | REAR WHELL PIN                         | 2             |
| 22        | 20020051    | FAN MOTOR GR./455                      | 1             |
| 23        | 30007905    | WIRING HARNESS/FAN MOTOR/455           | 1             |
| 24        | 35002921    | SCREW M4*10 DIN 7985 YSB               | 2             |
| 25        | 40002214    | FAN BRACKET RUBBER                     | 1             |
| 26        | 35000725    | FAN MOTOR BRACKET                      | 1             |
| 27        | 40009896    | FAN MOTOR COVER (PP-FR)                | 1             |
| 28        | 30007901    | FAN MOTOR ASSY./455 (1500rpm/220-240V) | 1             |
| 29        | 40002263    | UNIT COVER                             | 1             |
| 30        | 35000743    | SCREW 4.2*9.5 DIN 7981 YSB             | 3             |
| 31        | 35000728    | SCREW KA 50*14 WN 1412 EJOT            | 4             |
| 32        | 30007918    | POWER CORD GROUP 103N0018              | 1             |
| 33        | 30007911    | POWER CORD (2.1m)                      | 1             |
| 34        | 30007909    | OVER LOAD RELAY/103N0018/455-345       | 1             |

|                           |                             |
|---------------------------|-----------------------------|
| <b>VESTEL WHITE GOODS</b> | <b>CUSTOMER<br/>SUPPORT</b> |
|---------------------------|-----------------------------|

|                               |                        |                      |
|-------------------------------|------------------------|----------------------|
| <b>VESTEL<br/>WHITE GOODS</b> | <b>VESTEL NO-FROST</b> | <b>JUNE<br/>2003</b> |
|                               | <b>UNIT PARTS LIST</b> |                      |

| <b>NO</b> | <b>CODE</b> | <b>PART NAME</b>                          | <b>RF 47T</b> |
|-----------|-------------|-------------------------------------------|---------------|
|           | 50019757    | USER'S MANUEL/ENG                         | 1             |
|           | 50020884    | CIRCUIT DIAGRAM/465N-T ENG                | 1             |
|           | 50039468    | ENERGY LABEL/465S(T) CARAD (RF47T)        | 1             |
|           | 20129010    | NAME PLATE/465T CARAD-ENG (RF47T)         | 1             |
|           | 20031307    | PACKAGE GROUP/465 (SHRINK)                | 1             |
|           | 50007451    | PACKAGE SHRINK(870*710*0.09MM*R)          | 0,638 kg(1)   |
|           | 50039469    | PACKAGE LABEL/465S(T)SH-CARAD-ENG (RF47T) | 2             |
|           | 50009402    | STYROFOAM BOTTOM/465                      | 1             |
|           | 50009403    | STYROFOAM UPPER/465                       | 1             |
|           | 50007458    | STYROFOAM FRONT CORNER/455 (SHRINK)       | 2             |
|           | 50007459    | STYROFOAM BACK CORNER/455 (SHRINK)        | 2             |
|           | 50009445    | STYROFOAM SIDE MIDDLE/465                 | 4             |
|           | 50007471    | STYROFOAM FRONT MIDDLE 455                | 1             |
|           | 50007472    | STYROFOAM BACK MIDDLE 455                 | 1             |
|           | 50019500    | STYROFOAM FRONT ( 730*525*25)             | 1             |
|           | 50016856    | NO FROST LABEL (SHRINK)                   | 2             |
|           | 50007835    | SHRINK LABEL                              | 1             |
|           | 50020664    | WARRANTY LABEL/CARAD                      | 1             |

|                           |                             |
|---------------------------|-----------------------------|
| <b>VESTEL WHITE GOODS</b> | <b>CUSTOMER<br/>SUPPORT</b> |
|---------------------------|-----------------------------|

**REVISION SHORT HISTORY:**

| NO: | REV. NO: | REV. DATE: | PAGE NO: | REV. REASON       |
|-----|----------|------------|----------|-------------------|
| 01  | 00       | 12.06.2003 | All      | First publication |

**DISTRIBUTION :**

|                       |                         |
|-----------------------|-------------------------|
| <i>Greece – Carad</i> | <i>Date: 12.06.2003</i> |
|-----------------------|-------------------------|

PREPARED BY : Poyraz DOGACI  
APPROVED BY : Deniz SPORER

PRINTED DATE : 12 JUNE 2003  
DOCUMENT NO : 50041508