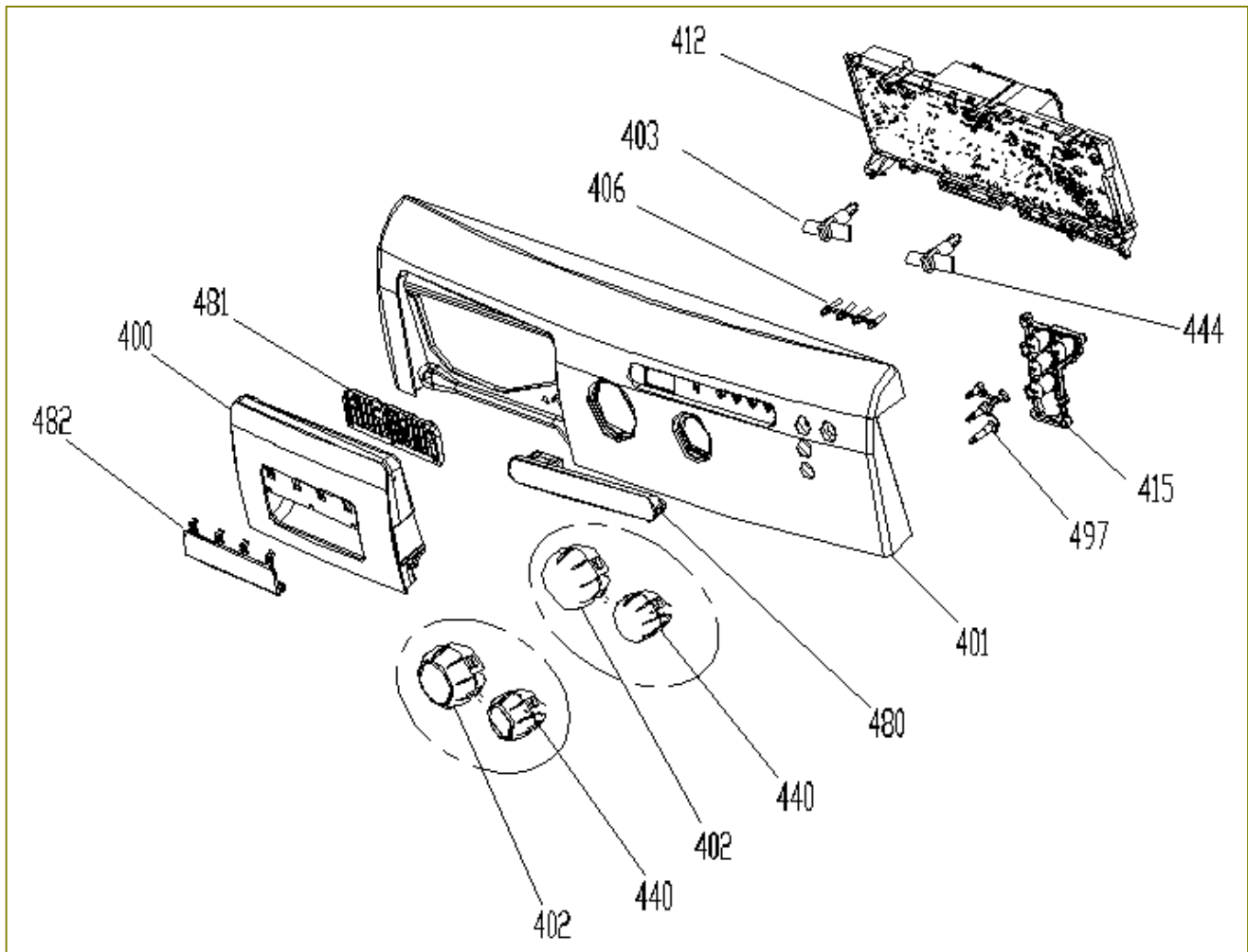
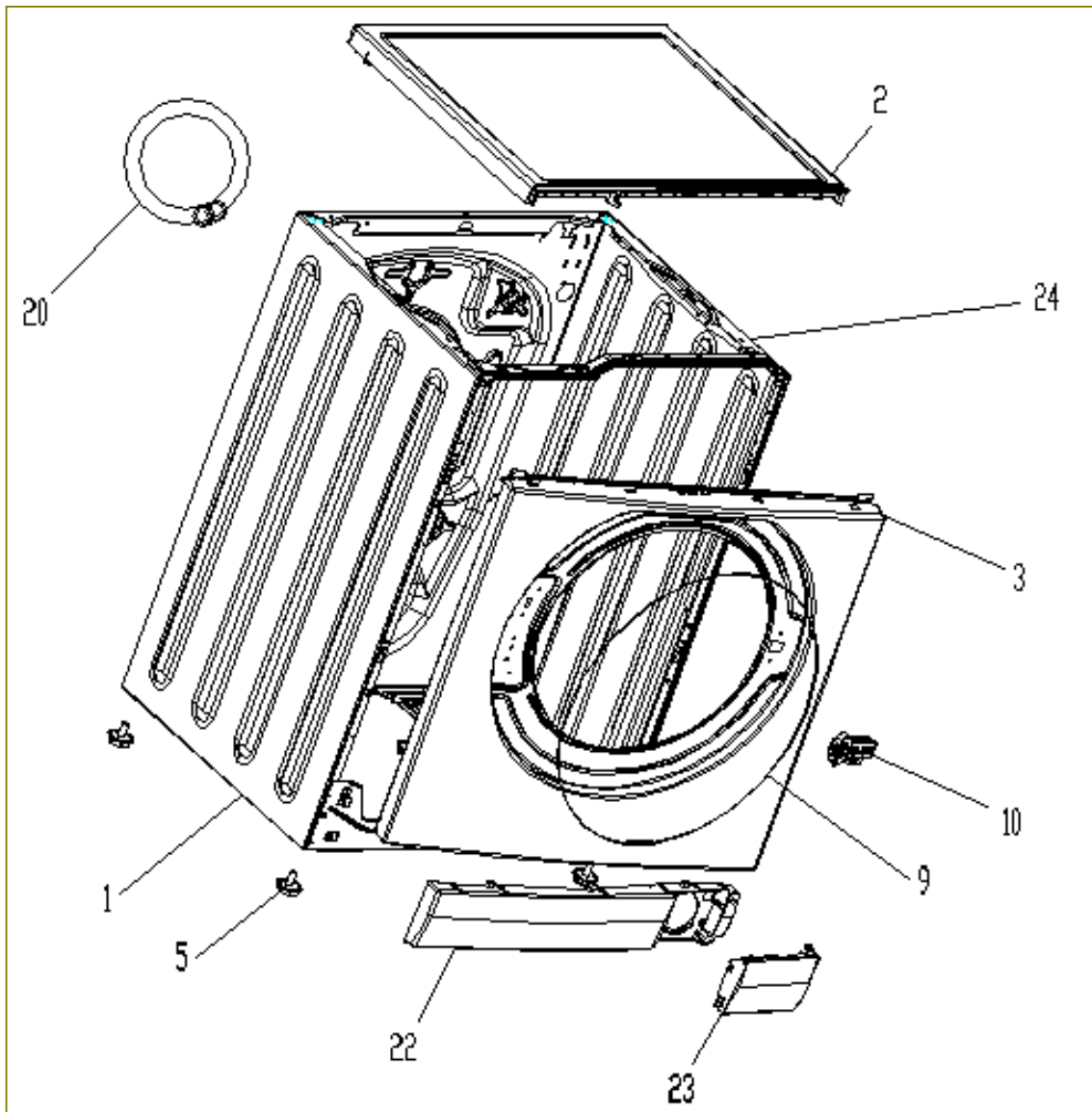


CONTROL PANEL PARTS



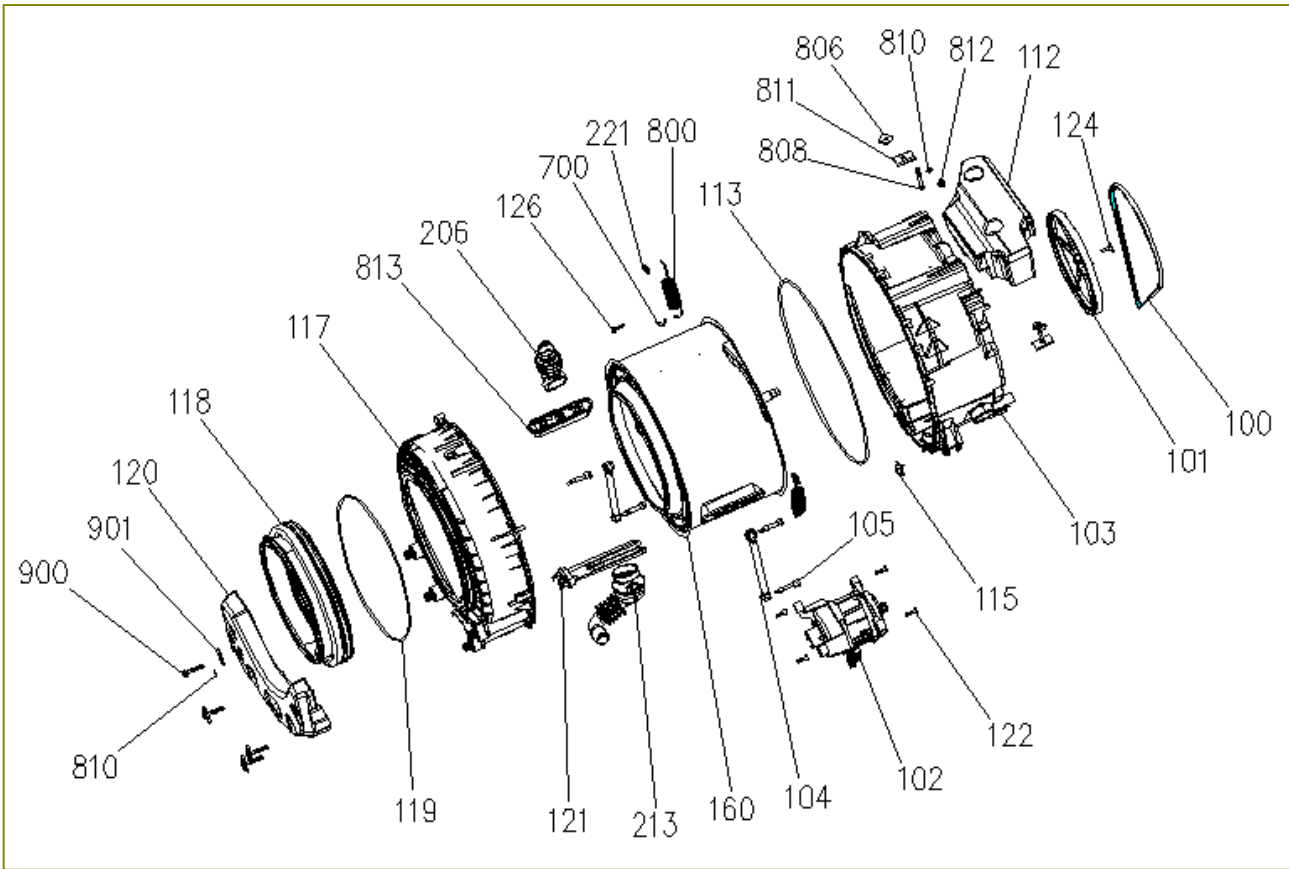
NO	PART NAME	QUANTITY
400	DETERGENT DRAWER COVER	1
401	CON.PAN.WITH SRGF	1
402	PR. ADJ. KNOB	1
440	REV/TEMP. ADJ. KNOB	1
415	SELECTION BUTTON TREE 4	1
403	PROGRAM KNOB SHAFT	1
444	REV/TEMPKNOB SHAFT(W.OUT KLIK)	1
406	LIGHT GUIDE FOUR WAY	1
412	ELECTRONIC CARD/ W.PCB.BOX	1
497	SELECTION BUTTON LIGHT GUIDE 4	1
480	DISPLAY BASIC	1
481	DETERGENT DRAWER COVER CUSHION	1
482	DET.DRAWER COV.LOGO	1
500	CONTROL PANEL GROUP (indicated for the website)	1

FRONT PANEL PARTS



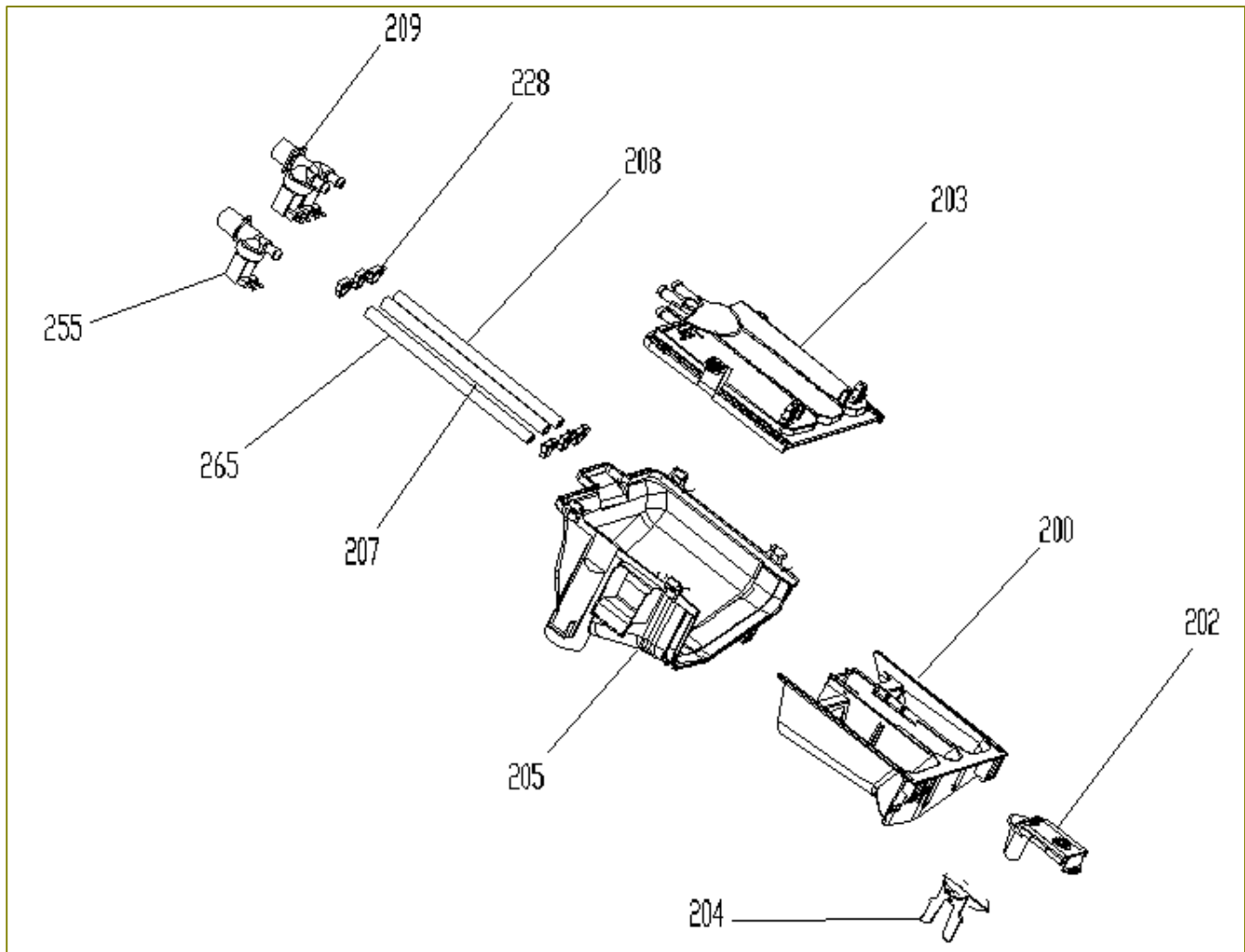
NO	PART NAME	QUANTITY
1	BODY GROUP PAINTED	1
2	UPPER TRAY GROUP	1
3	FRONT PANEL GROUP	1
4	PLINTH GROUP (includes 22+23)	1
22	PLINTH	1
23	PLINTH COVER	1
5	ADJUSTABLE FEET	4
9	HOUSING FRAME BELLOW CLIP-PHYTON	1
10	DOOR LOCK	1
24	TOP SUPPORT SHEET II	1
20	WATER ENTRY HOSE GROUP	1

WASHING GROUP PARTS



NO	PART NAME	QUANTITY
103	REAR TUB GROUP	1
117	FRONT TUB	1
160	DRUM GROUP	1
102	MOTOR	1
113	TUB SEAL	1
101	DRIVEN PULLEY	1
100	BELT	1
122	COUNTERSUNK HEAD BOLT 8*28 TORX	4
206	TUB ENTERANCE WITH BELLOW HOSE	1
118	TUB BELLOWS SEAL	1
126	HEXAGON HEAD BOLT 6X30 PT	19
900	HEXAGON HEAD BOLT 10 X 52	4
901	PLAIN WASHER 10,5X40X2,5	4
810	CONICAL SPRING WASHER 8.4X18X2(DIN 6796) <i>(for 1200, 1400 and 1600 RPM)</i>	6
105	SHOCK ABSORBER PIM	4
119	TUB GASKET CLIP	1
120	FRONT CONCRETE WEIGHT	1
121	RESISTANCE GR	1
115	RESISTANCE FIXING WIRE	1
104	SHOCK ABSORBER	2
213	TUB EXIT WITH BELLOW HOSE WITH BALL	1
124	COUNTERSUNK HEAD BOLT M 8*29	1
700	TUB HANGER SPRING PART	2
800	TUB SPRING	2
808	MUSHROOM HEAD SQUARE NECK BOLT M 8*65	2
806	PLAIN WASHER 8.4X28X3	2
811	UPPER CONCRETE SUPPORT SHEETIRON PART	2
812	HEX.NUT WITH FLANGE SERRATED M8 DIN6923	2
813	PLASTIC LIFTER	3
112	UPPER CONCRETE WEIGHT	1
221	HANGER SPRING SHEETIRON PLS.	2

DETERGENT DRAWER GROUP



(255-265-FOR DOUBLE WATER INLET WASHERS)

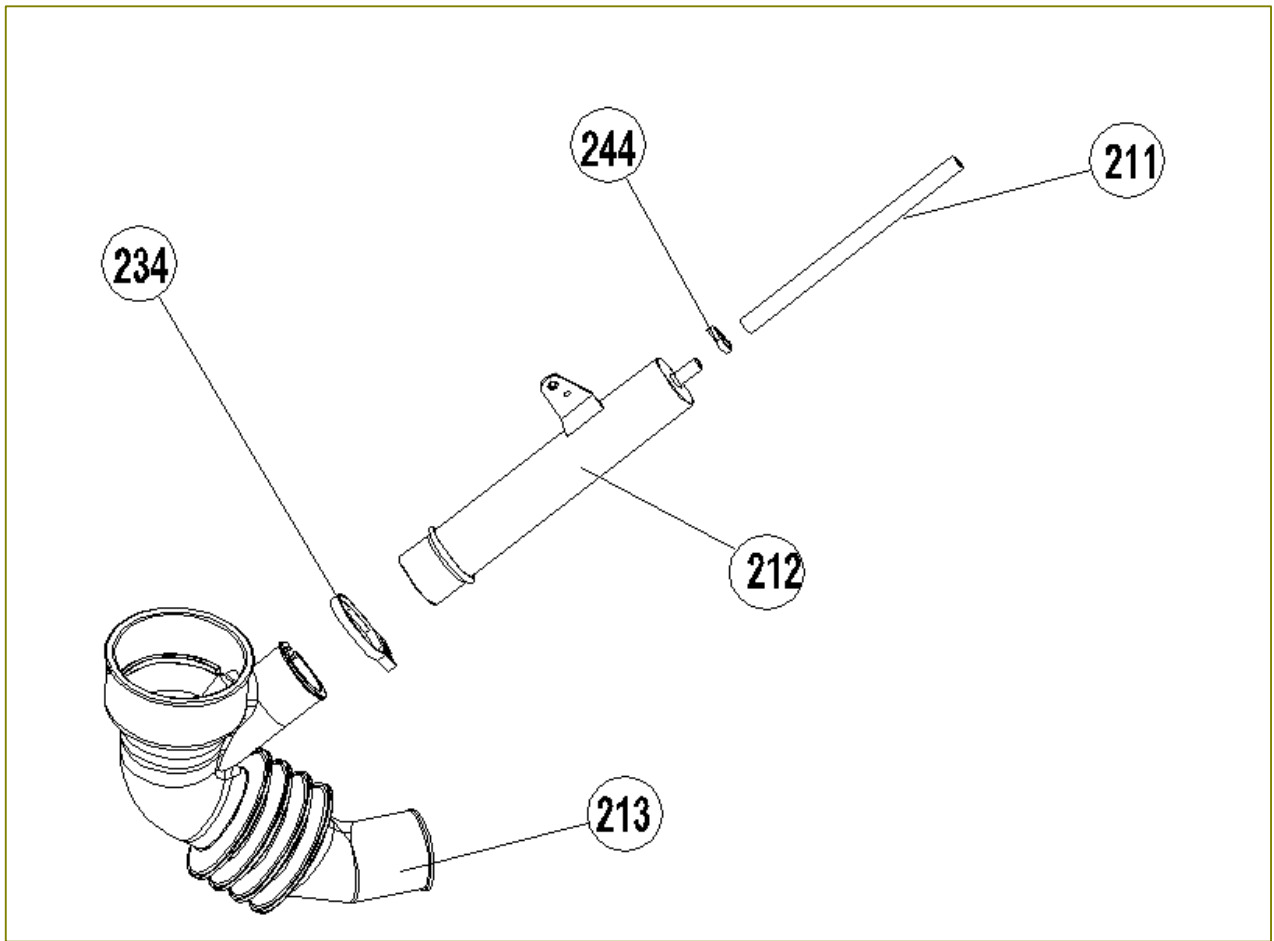
NO	PART NAME	QUANTITY
203	WATER DISTRIBUTION PLATE GROUP	1
205	DETERGENT DRAWER HOUSING	1
200	DETERGENT DRAWER	1
202	SIPHON COVER	1
204	STEAM CONSERVATIVE	1
228	PLASTIC HOSE HANDCUFFS	6
207	VALVE-DETERGENT BOX HOSE	1
208	VALVE-DETERGENT BOX HOSE	1
265	VALVE-DETERGENT BOX HOSE	1
209	VALVE(TWO EXIT)	1
255	VALVE(ONE EXIT)	1
270	DETERGENT BOX GROUP	1
275	DETERGENT BOX GROUP/HOSE	1
280	DETERGENT BOX GROUP/FULL	1

203-205-200-202-204-..... DETERGENT BOX GROUP

203-205-200-202-204-228-207-208..... DETERGENT BOX GROUP/HOSE

203-205-200-202-204-228-207-208-209..... DETERGENT BOX GROUP/FULL

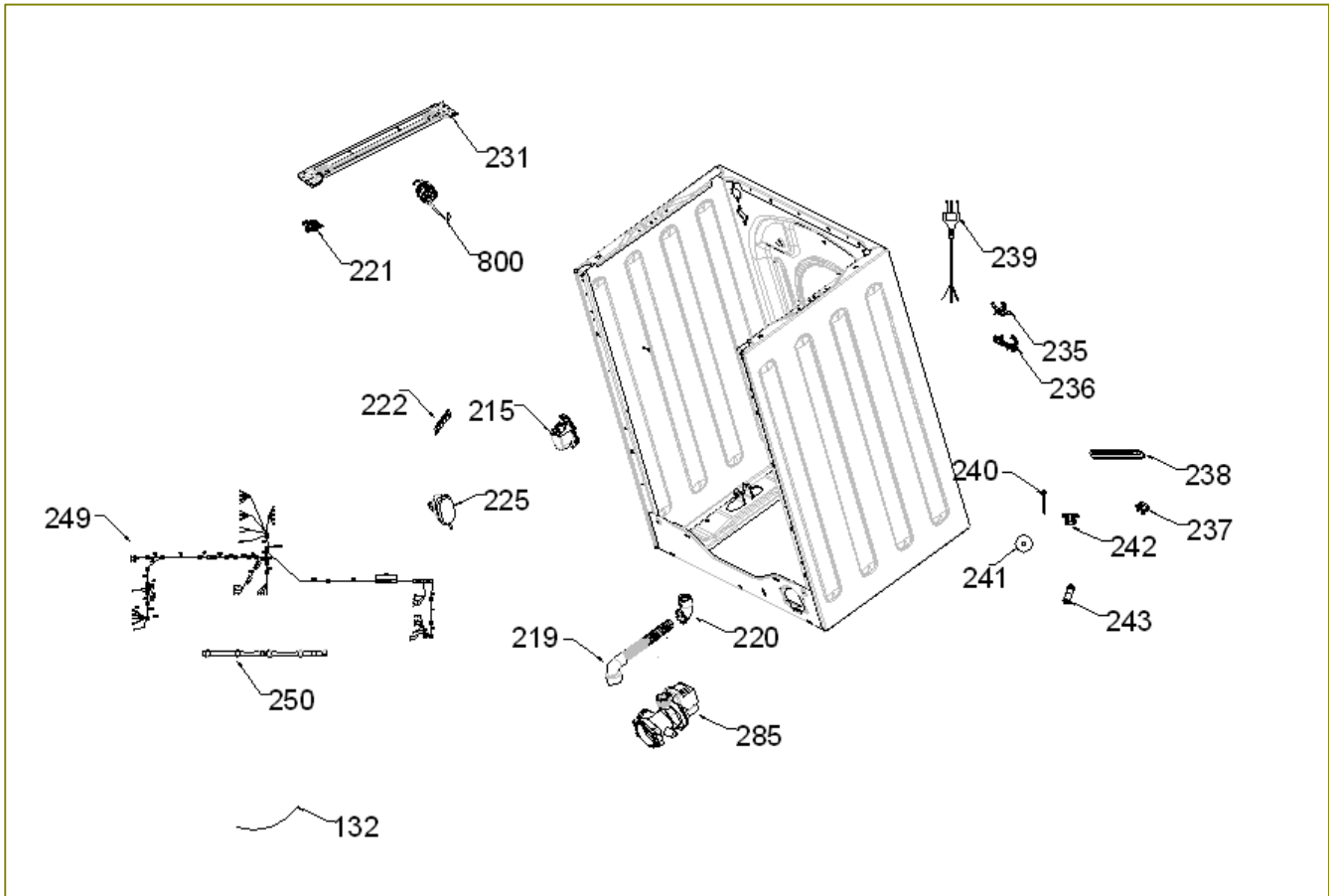
PRESSURE SWITCH HOSE GROUP



NO	PART NAME	QUANTITY
213	TUB EXIT WITH BELLOW HOSE WITH BALL	1
212	PRESSURE SWITCH WATER RESERVOIR	1
211	PRESSURE SWITCH HOSE	1
234	HOSE HANDCUFFS	1
244	HOSE HANDCUFFS	1
295	PRESSURE SWITCH HOSE GROUP	1

213-212-211-234-244----- PRESSURE SWITCH HOSE GROUP

BODY GROUP PARTS

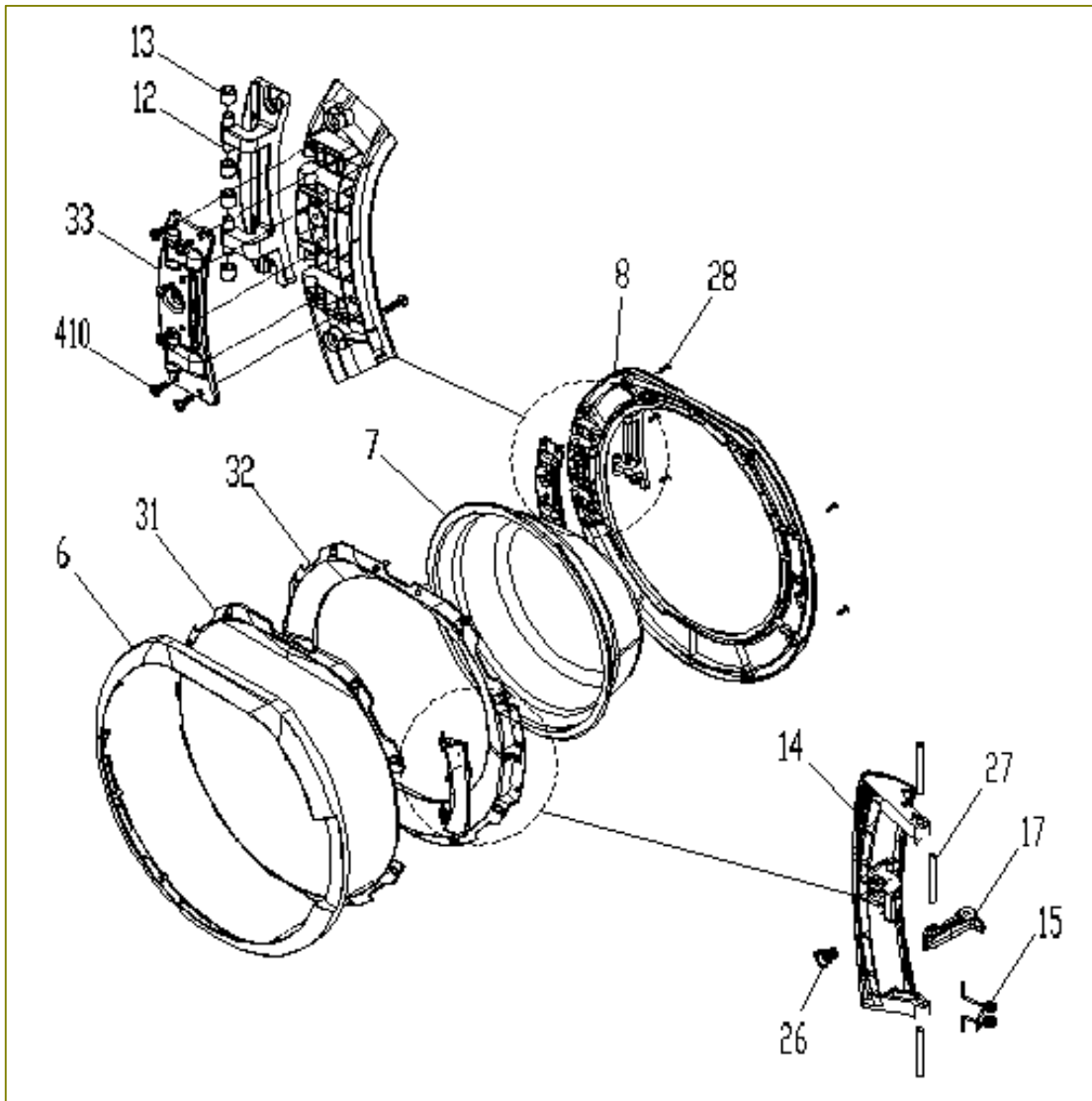


NO	PART NAME	QUANTITY
285	PUMP GROUP	1
220	DRAIN HOSE ROUTER PLASTIC	1
219	DRAIN HOSE	1
225	PRESSURE SWITCH	1
215	PARASITE FILTER	1
249	CABLE HARNESS	1
250	CABLE HARNESS HOLDER PLS	1
800	TUB SPRING	2
221	HANGER SPRING SHEETIRON PLS.	2
236	DRAIN HOSE AND CABLE HOLDING PLS.	2
235	DRAIN HOSE HOLDING PLS	2
239	POWER CORD GROUP	1
222	PRESSURE SWITCH MOUNTING CLIP	1
238	SPEED CONTROL HOLE STOPPER	1
296	CABLE GROUP	1
242	TRANSPORT SCREW PLASTIC A	4
243	TRANSPORT SCREW PLASTIC B	4
240	TRANSPORT SCREW	4
241	WASHER 8,5*36*2	4
231	SPRING HANGER SHEETIRON GROUP	1
237	TRANSPORT SCREW STOPPER	5
290	TRANSPORT SCREW GROUP	4

240-241-242-243..... TRANSPORT SCREW GROUP

249-250-222-10..... CABLE GROUP

PORTHOLE GROUP



NO	PART NAME	QUANTITY
8	PORTHOLE INNEER PLASTIC	1
410	SCREW 4X14 PAN HEAD WITH COL.UND.HEAD	6
33	DOOR HINGE SUPPORT SHEET	1
7	DOOR GLASS/PYTHON	1
6	PORTHOLE OUTER PLASTIC	1
31	DOOR FRONT COVER <i>(Optional)</i>	1
32	P.HOLE OUTER PLS INNER FRAME	1
26	HANDLE SPRING	1
15	HOOK SPRING	1
28	SCREW 3.5X16PAN.HE.WITH COL.CR.RE.UN.HE	5
17	DOOR HOOK II.(METAL)	1
27	DOOR HANDLE PIM	3
14	DOOR HANDLE	1
12	HINGE II	1
13	HINGE BUSHING II	4
50	PORTHOLE GROUP (all parts)	1