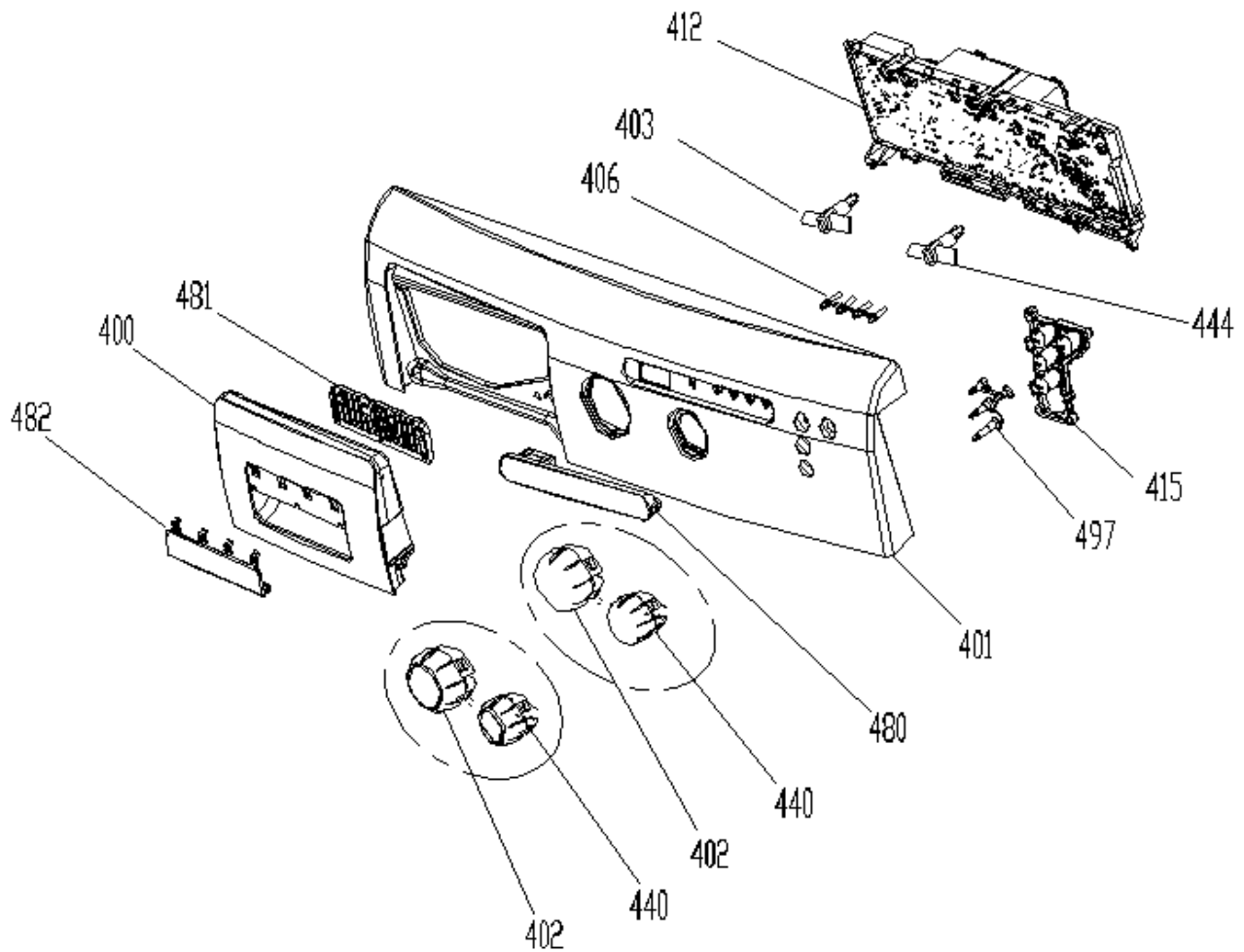
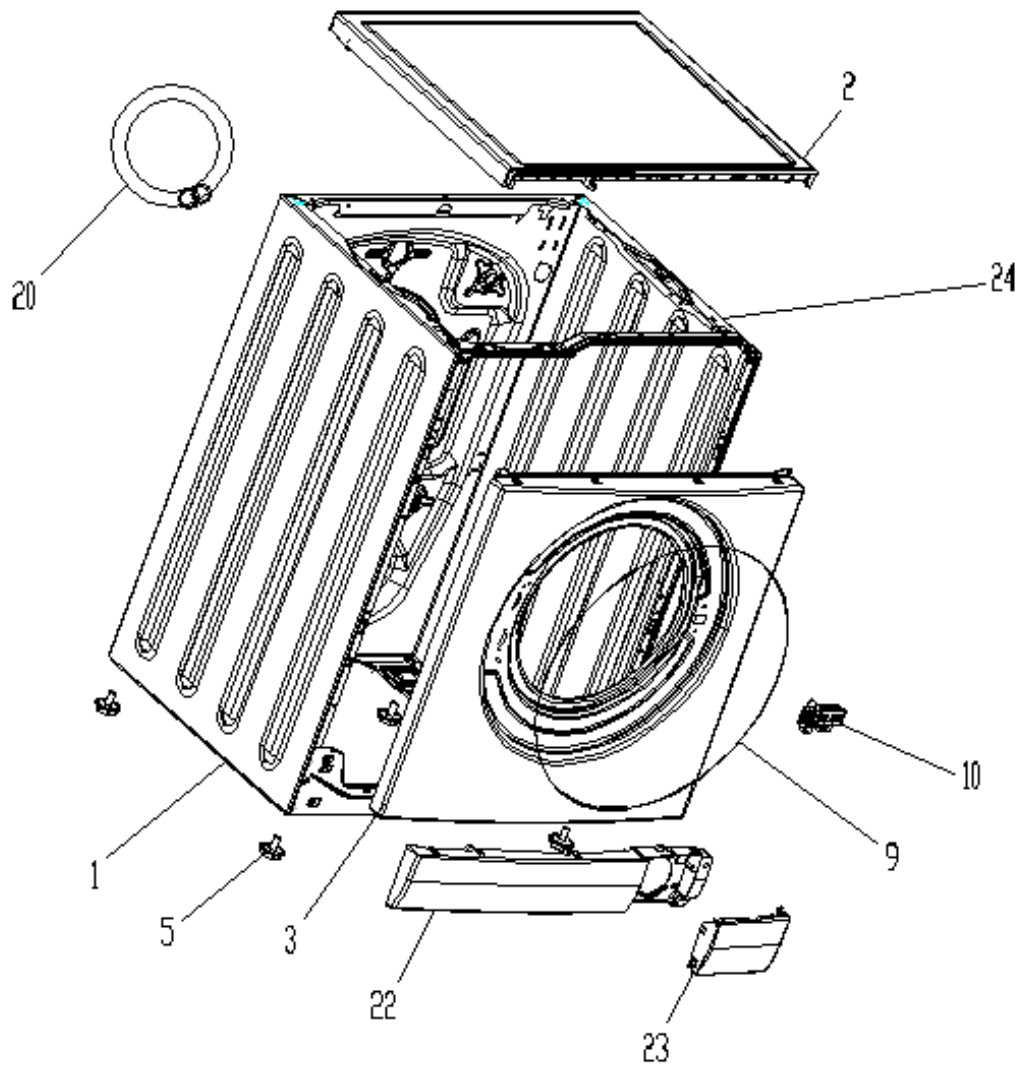


CONTROL PANEL PARTS



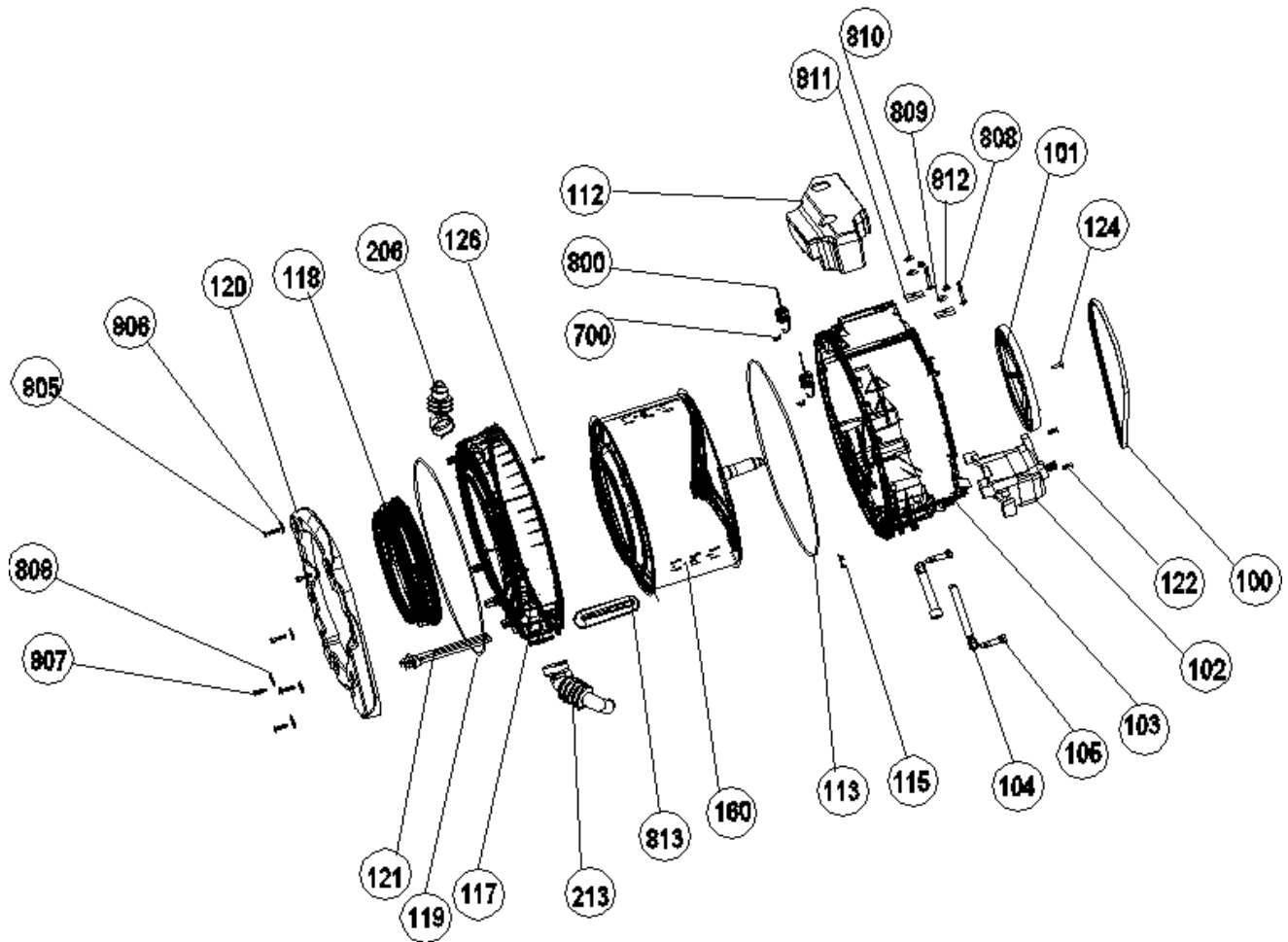
| NO | PART NAME | QUANTITY |
|-----|--|----------|
| 400 | DETERGENT DRAWER COVER | 1 |
| 401 | CON.PAN.WITH SRGF | 1 |
| 402 | PR. ADJ. KNOB | 1 |
| 440 | REV/TEMP. ADJ. KNOB | 1 |
| 415 | SELECTION BUTTON TREE 4 | 1 |
| 403 | PROGRAM KNOB SHAFT | 1 |
| 444 | REV/TEMPKNOB SHAFT(W.OUT KLIK) | 1 |
| 406 | LIGHT GUIDE FOUR WAY | 1 |
| 412 | ELECTRONIC CARD/ W.PCB.BOX | 1 |
| 497 | SELECTION BUTTON LIGHT GUIDE 4 | 1 |
| 480 | DISPLAY BASIC | 1 |
| 481 | DETERGENT DRAWER COVER CUSHION | 1 |
| 482 | DET.DRAWER COV.LOGO | 1 |
| 500 | CONTROL PANEL GROUP (indicated for the website) | 1 |

FRONT PANEL PARTS



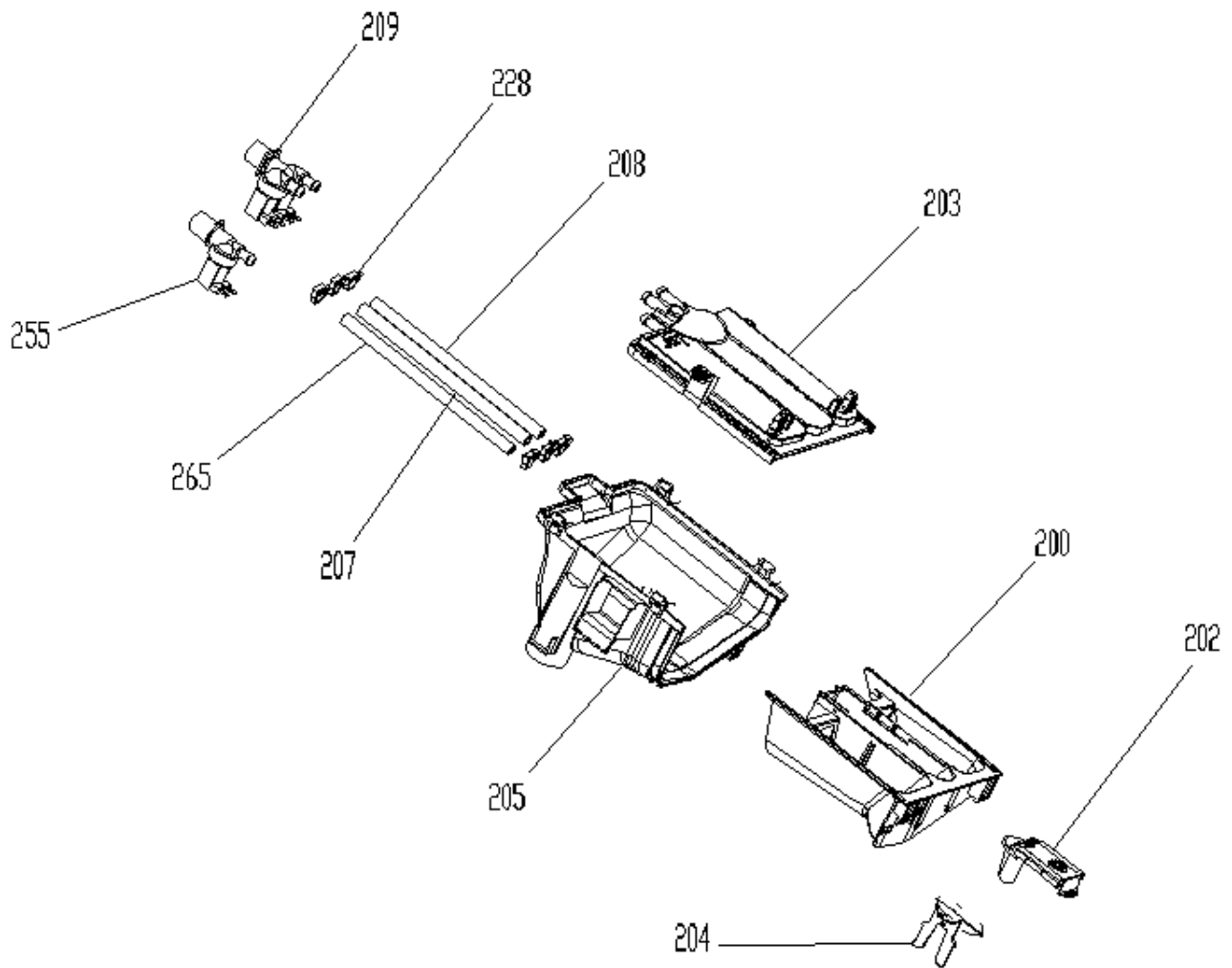
| NO | PART NAME | QUANTITY |
|----|-------------------------------|----------|
| 1 | BODY GROUP PAINTED | 1 |
| 2 | UPPER TRAY GROUP | 1 |
| 3 | FRONT PANEL GROUP | 1 |
| 4 | PLINTH GROUP (includes 22+23) | 1 |
| 22 | PLINTH | 1 |
| 23 | PLINTH COVER | 1 |
| 5 | ADJUSTABLE FEET | 4 |
| 9 | BODY-GASKET CLAMP | 1 |
| 10 | DOOR LOCK | 1 |
| 24 | TOP SUPPORT SHEET | 1 |
| 20 | WATER ENTRY HOSE GROUP | 1 |

WASHING GROUP PARTS



| NO | PART NAME | QUANTITY |
|-----|---------------------------------------|----------|
| 103 | REAR TUB GROUP | 1 |
| 117 | FRONT TUB | 1 |
| 160 | DRUM GROUP | 1 |
| 102 | MOTOR | 1 |
| 113 | TUB SEAL | 1 |
| 101 | DRIVEN PULLEY | 1 |
| 100 | BELT | 1 |
| 122 | SCREW M 8*25 | 4 |
| 206 | TUB ENTERANCE WITH BELLOW HOSE | 1 |
| 118 | TUB BELLOWS SEAL | 1 |
| 126 | SCREW PT 6*30 | 19 |
| 805 | SCREW PT 8*40 | 4 |
| 806 | WASHER 8,4*28*3 | 4 |
| 808 | WASHER 37*23*2 | 2 |
| 807 | SCREW PT 8*34 | 2 |
| 119 | TUB-GASKET CLAMP | 1 |
| 120 | FRONT CONCRETE WEIGHT | 1 |
| 121 | RESISTANCE GR | 1 |
| 115 | RESISTANCE FIXING WIRE | 1 |
| 104 | SHOCK ABSORBER | 1 |
| 213 | TUB EXIT WITH BELLOW HOSE WITH BALL | 1 |
| 124 | SCREW PT 8*25 | 1 |
| 700 | TUB HANGER SPRING PART | 2 |
| 800 | TUB SPRING | 2 |
| 808 | SCREW M8*65 | 3 |
| 809 | WASHER 8,5*35*3 | 3 |
| 811 | UPPER CONCRETE SUPPORT SHEETIRON PART | 2 |
| 812 | M8 NUT | 2 |
| 813 | PLASTIC LIFTER | 3 |
| 810 | WASHER 9*30*3(DIN 6796) | 3 |
| 112 | UPPER CONCRETE WEIGHT | 1 |
| 105 | SHOCK ABSORBER PIM | 2 |

DETERGENT DRAWER GROUP



(255-265-FOR DOUBLE WATER INLET WASHERS)

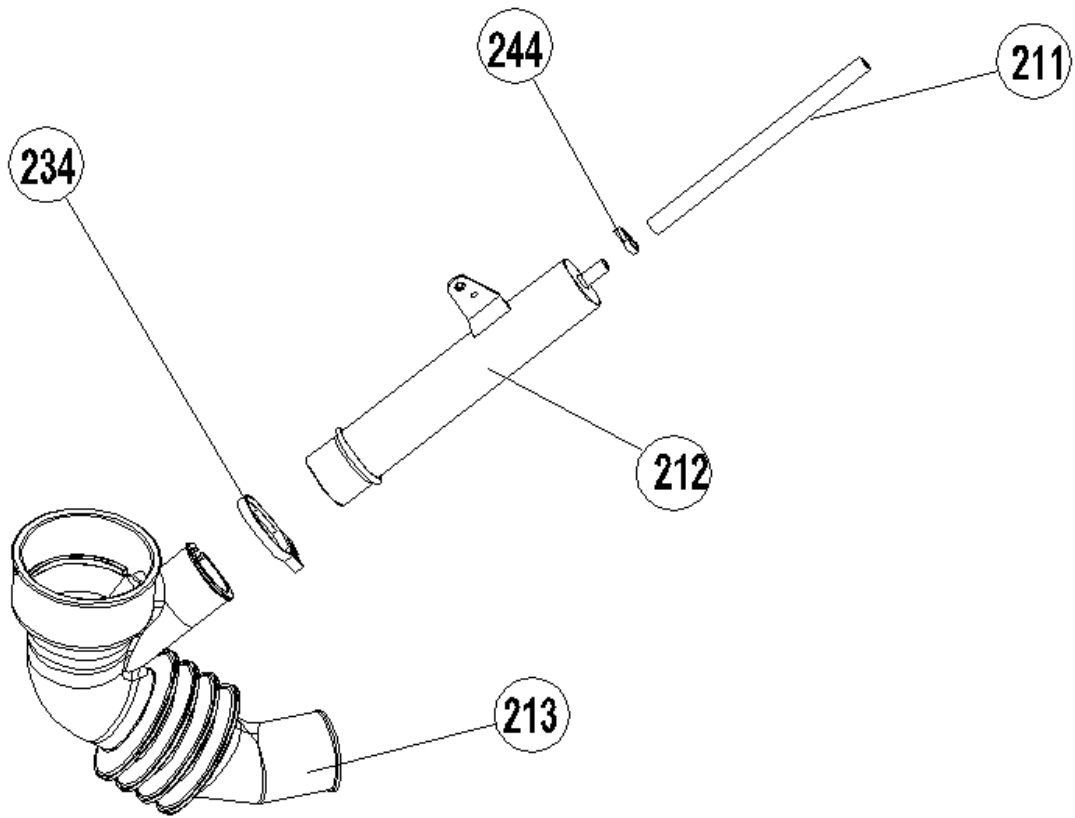
| NO | PART NAME | QUANTITY |
|-----|--------------------------------|----------|
| 203 | WATER DISTRIBUTION PLATE GROUP | 1 |
| 205 | DETERGENT DRAWER HOUSING | 1 |
| 200 | DETERGENT DRAWER | 1 |
| 202 | SIPHON COVER | 1 |
| 204 | STEAM CONSERVATIVE | 1 |
| 228 | PLASTIC HOSE HANDCUFFS | 6 |
| 207 | VALVE-DETERGENT BOX HOSE | 1 |
| 208 | VALVE-DETERGENT BOX HOSE | 1 |
| 265 | VALVE-DETERGENT BOX HOSE | 1 |
| 209 | VALVE(TWO EXIT) | 1 |
| 255 | VALVE(ONE EXIT) | 1 |
| 270 | DETERGENT BOX GROUP | 1 |
| 275 | DETERGENT BOX GROUP/HOSE | 1 |
| 280 | DETERGENT BOX GROUP/FULL | 1 |

203-205-200-202-204-..... DETERGENT BOX GROUP

203-205-200-202-204-228-207-208..... DETERGENT BOX GROUP/HOSE

203-205-200-202-204-228-207-208-209..... DETERGENT BOX GROUP/FULL

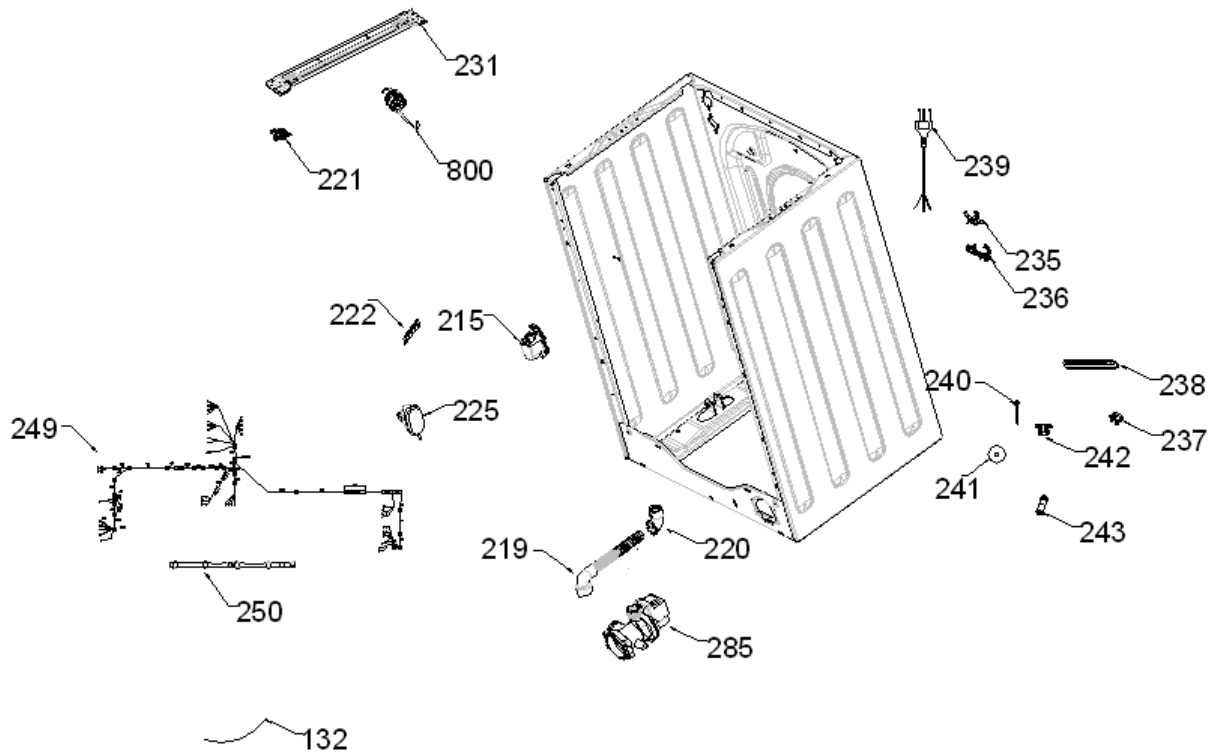
PRESSURE SWITCH HOSE GROUP



| NO | PART NAME | QUANTITY |
|-----|-------------------------------------|----------|
| 213 | TUB EXIT WITH BELLOW HOSE WITH BALL | 1 |
| 212 | PRESSURE SWITCH WATER RESERVOIR | 1 |
| 211 | PRESSURE SWITCH HOSE | 1 |
| 234 | HOSE HANDCUFFS | 1 |
| 244 | HOSE HANDCUFFS | 1 |
| 295 | PRESSURE SWITCH HOSE GROUP | 1 |

213-212-211-234-244----- PRESSURE SWITCH HOSE GROUP

BODY GROUP PARTS

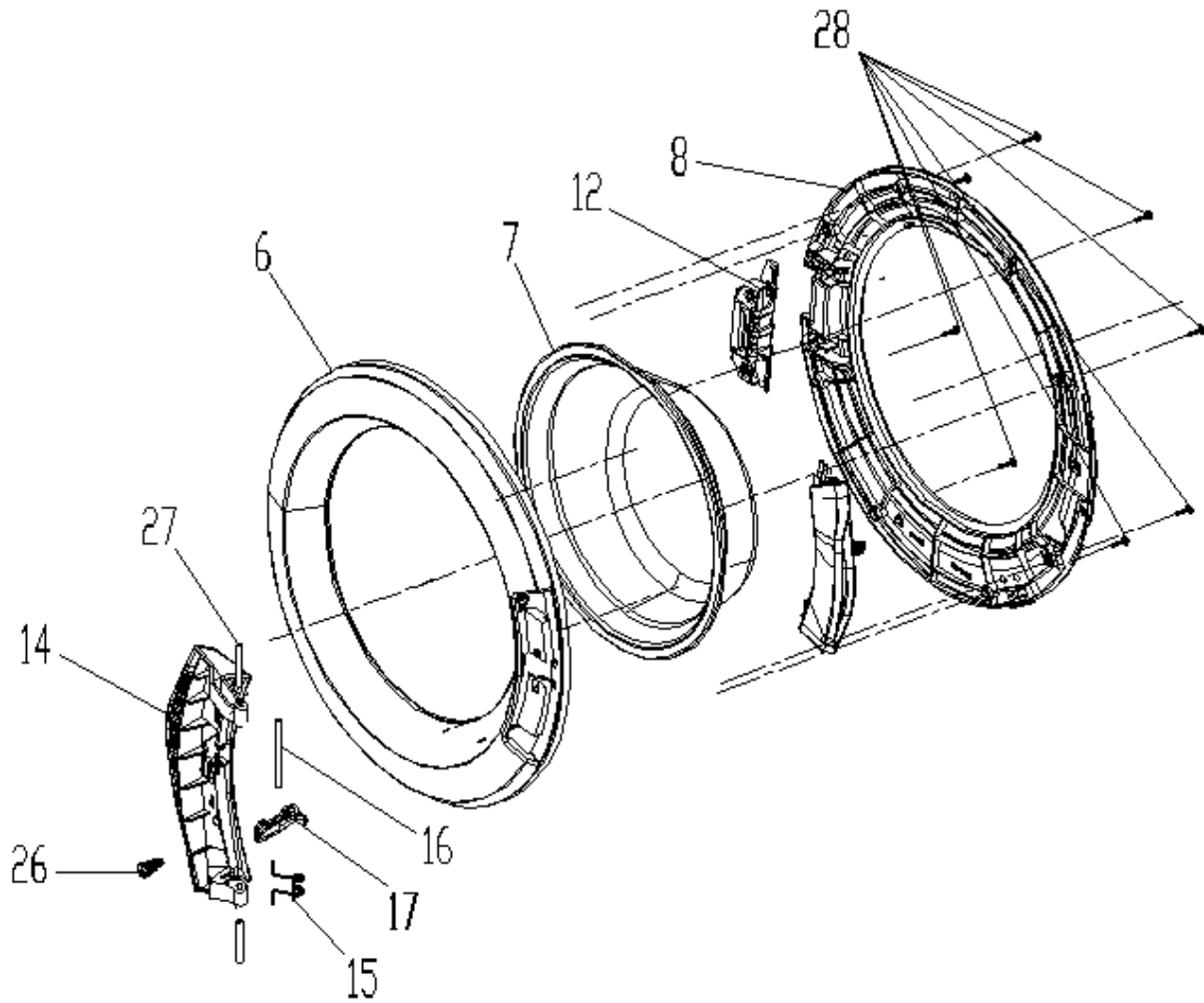


| NO | PART NAME | QUANTITY |
|-----|-----------------------------------|----------|
| 285 | PUMP GROUP | 1 |
| 220 | DRAIN HOSE ROUTER PLASTIC | 1 |
| 219 | DRAIN HOSE | 1 |
| 225 | PRESSURE SWITCH | 1 |
| 215 | PARASITE FILTER | 1 |
| 249 | CABLE HARNESS | 1 |
| 250 | CABLE HARNESS HOLDER PLS | 1 |
| 800 | TUB SPRING | 2 |
| 221 | HANGER SPRING SHEETIRON PLS. | 2 |
| 236 | DRAIN HOSE AND CABLE HOLDING PLS. | 2 |
| 235 | DRAIN HOSE HOLDING PLS | 2 |
| 239 | POWER CORD GROUP | 1 |
| 222 | PRESSURE SWITCH MOUNTING CLIP | 1 |
| 238 | SPEED CONTROL HOLE STOPPER | 1 |
| 296 | CABLE GROUP | 1 |
| 242 | TRANSPORT SCREW PLASTIC A | 4 |
| 243 | TRANSPORT SCREW PLASTIC B | 4 |
| 240 | TRANSPORT SCREW | 4 |
| 241 | WASHER 8,5*36*2 | 4 |
| 231 | SPRING HANGER SHEETIRON GROUP | 1 |
| 237 | TRANSPORT SCREW STOPPER | 5 |
| 290 | TRANSPORT SCREW GROUP | 4 |

240-241-242-243..... TRANSPORT SCREW GROUP

249-250-222-10..... CABLE GROUP

DOOR GROUP



| NO | PART NAME | QUANTITY |
|----|---|----------|
| 27 | DOOR HANDLE PIM | 2 |
| 12 | SHEET METAL HINGE GROUP | 1 |
| 6 | PORTHOLE OUTER PLASTIC | 1 |
| 16 | DOOR HANDLE TONGUE PIM | 1 |
| 14 | DOOR HANDLE | 1 |
| 15 | HOOK SPRING | 1 |
| 17 | HOOK | 1 |
| 7 | DOOR GLASS | 1 |
| 8 | PORTHOLE INNER PLASTIC | 1 |
| 28 | SCREW 3.5X16PAN.HE.WITH COL.CR.RE.UN.HE | 8 |
| 26 | HANDLE SPRING | 1 |
| 50 | PORTHOLE GROUP (all parts) | 1 |