



EN

**PORTABLE AIR CONDITIONER (LOCAL)**

# **KENNY EVO**



## **OPERATING INSTRUCTIONS**

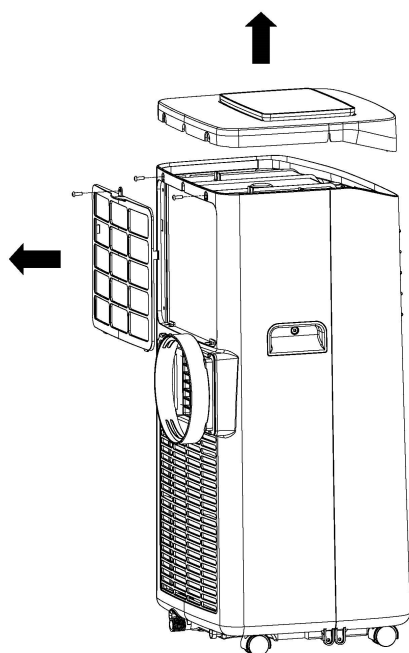
Read the instructions carefully before operating the appliance or carrying out maintenance work. Observe all the safety instructions; failure to do so may lead to accidents and/or damage. Store these instructions in a safe place for future reference.

## I. Remove the top cover assembly

1. remove the three screws behind the top cover assembly with a screwdriver and remove the filter;

2. use the hand to buckle the back sides of the top cover, after the top cover assembly is separated from the body, the front panel and the top cover assembly edge are lightly arranged with the palm, so that the top cover buckle is separated from the front panel.

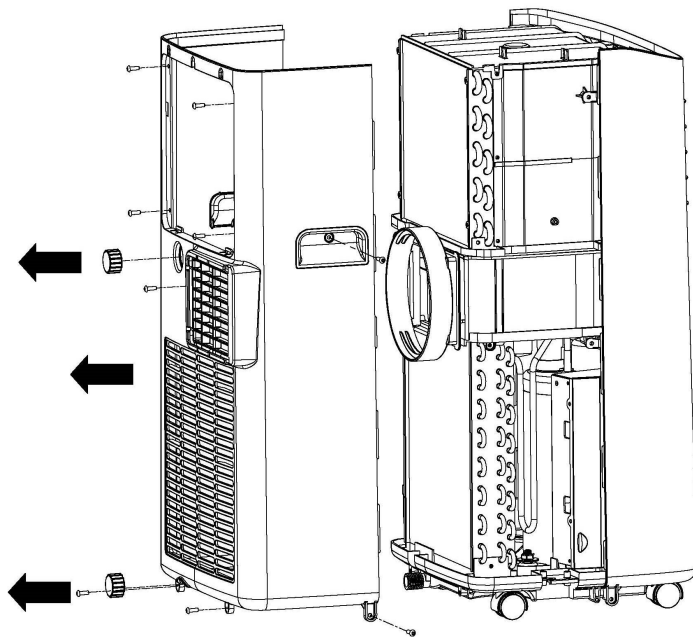
3. remove the top cover assembly.



## II. Remove front panel

First, press the counterclockwise button with the upper and lower two stop buttons, then remove the two screws of the left and right handle position and the four screws of the two end plate with a screwdriver; then remove the four screws of the rear shell and the bottom plate fixed

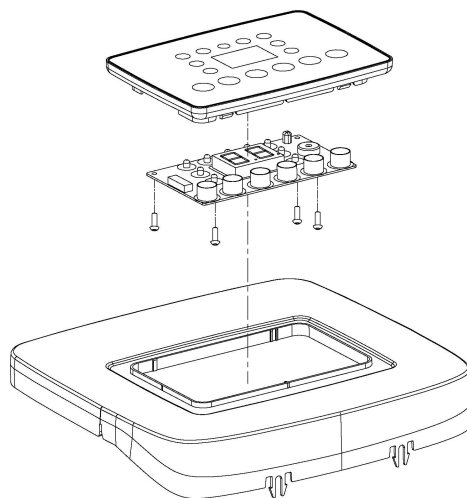
with the side of the stop button; finally, remove the rear shell backward.



### III. Split top cover, display PCB plate

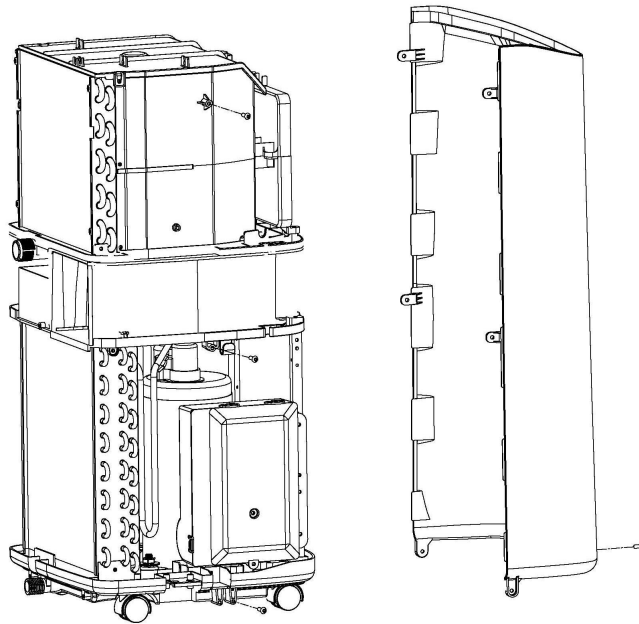
1. push the four clasps of the middle small top cover buckle on the large top cover to the middle, the small top cover can be removed from the large top cover.

2. remove the four screws that show the PCB plate with the small top cover fixed with a screwdriver.



## IV. Dismantling of the front shell

1. remove the left and right six screws fixed to the front housing with the internal assembly with one screw at the front bottom.

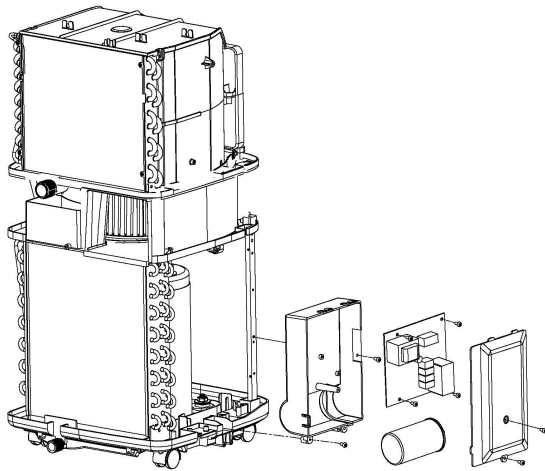


## V. Dismantling the electronic control box

1. remove the two screws on the cover of the electronic control box and pull out the electronic control box.

2. remove the four screws of the PCB main board and the electronic control box with a screwdriver, and remove the fastened to the electronic control box.

3. remove the two screws of the electronic control box with the chassis and sheet metal support with a screwdriver.



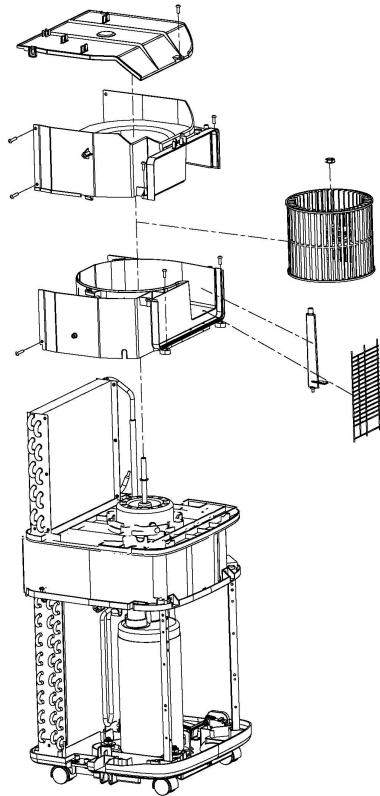
## **VI. Dismantling the volute of the upper duct**

1. remove the top cover and three screws fixed to the upper duct volute with a screwdriver.

2. use tools to fix the upper wheel blade do not rotate the lock in the motor of the reverse nut removed to remove the wind wheel.

3. remove the four screws on the left and right sides of the upper air duct volute and the evaporator end plate, then remove the two screws fixed on the upper air duct volute and the front of the lower air duct volute, and remove the upper air duct volute, vertical pendulum blade and outlet air protective net.

4. remove the left and right screws fixed under the volute of the upper air duct and the end plate of both devices, and then remove the two screws fixed under the upper air duct shell and the front of the lower air duct volute Out, and then the lower duct under the volute.



## VII. Dismantling the volute of the lower duct

1. remove the screws fixed on the lower duct volute and on the left and right sides of the evaporator.

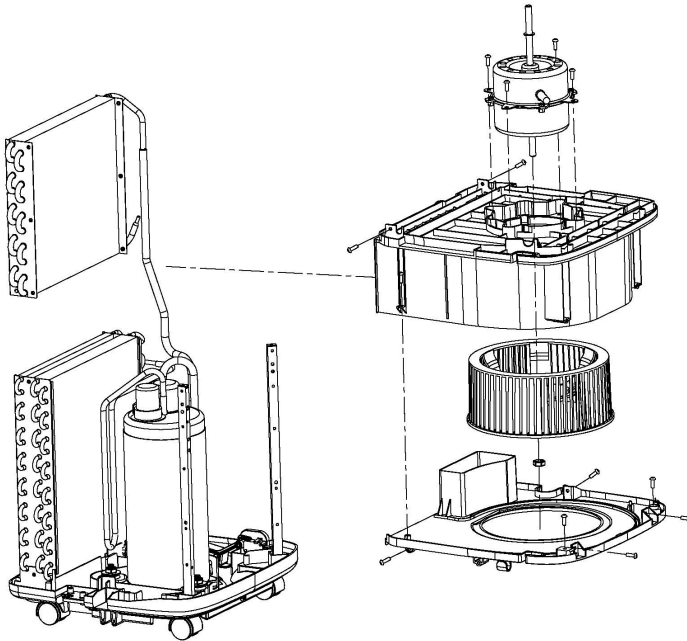
2. remove the left and right side screws under the lower duct volute and under the condenser.

3. remove the screw under the lower duct volute and the two supports, then remove the lower duct volute assembly.

4. down duct volute and down duct volute left and right two screws and the front two screws removed. Take the lower duct under the volute.

5. remove the inside wind wheel with the motor fixed nut. Take out the wind wheel.

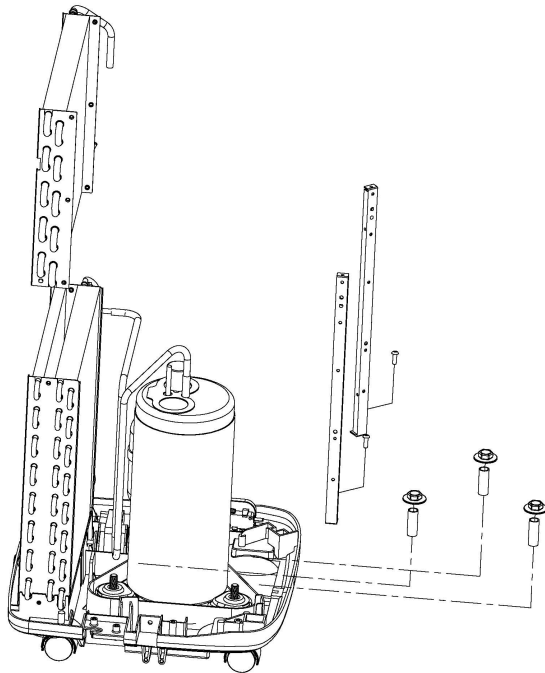
6. the motor write down the four screws on the duct volute, remove the motor.



## VIII. Dismantling of the refrigeration system

1. remove the two screws of the main bracket fixed on the chassis and remove the main bracket.

2. the three nuts of the fixed compressor foot are rotated separately, the nut and gasket are taken out, and the refrigeration system composed of compressor, condenser and evaporator is raised upward. (Note that the line must not break) to remove it from the chassis assembly.



## IX. Split Chassis Components

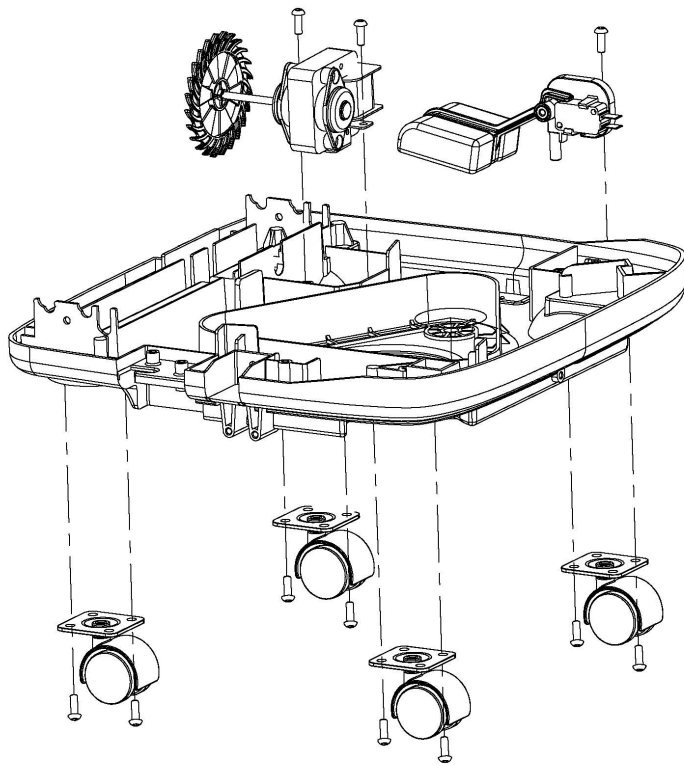
1. remove the two screws that hold the main frame on the chassis and remove the main frame.

2. remove the two screws that hold the water heater on the chassis and remove the water heater.

Remove a screw from the water level switch on the chassis and remove the water level switch.

4. remove the eight screws of the four universal wheels fixed on the disc and remove the four universal wheels.





**REGULATION (EU) No. 517/2014 – F-GAS**

**The unit contains R410A, a fluorinated greenhouse gas with global warming potential (GWP) = 2087.50. 0.260 kg = 0.543 CO<sub>2</sub> equiv. tons. Do not release R410A into the atmosphere.**



improve your life

[www.argoclima.com](http://www.argoclima.com)